

|             |          |             |
|-------------|----------|-------------|
| APP CRS     | Rwy Idg  | <b>5003</b> |
| <b>191°</b> | TDZE     | <b>39</b>   |
|             | Apt Elev | <b>62</b>   |

# RNAV (GPS) RWY 19

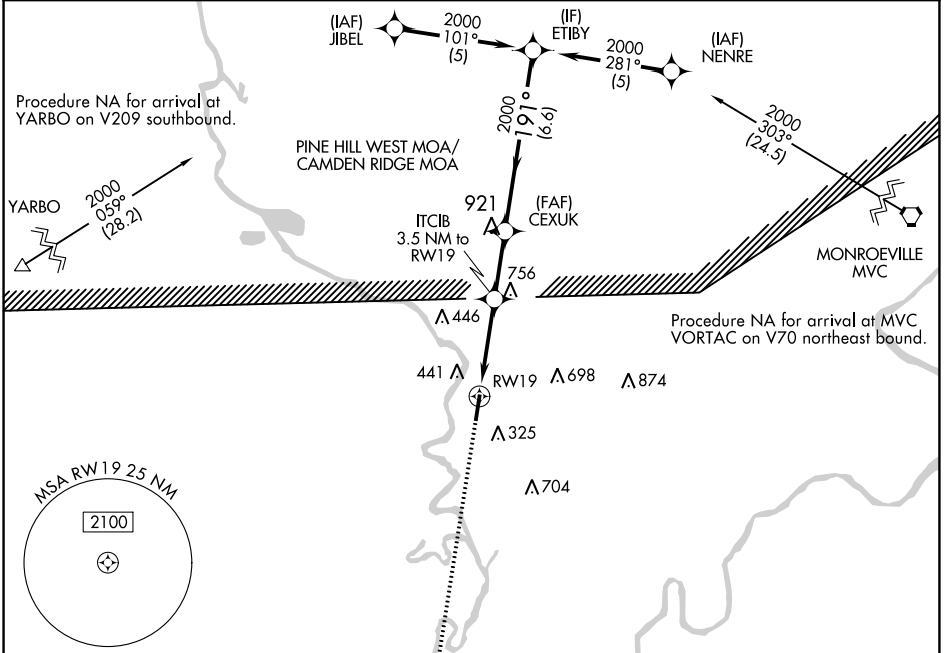
JACKSON MUNI (4R3)

**▼** DME/DME RNP-0.3 NA. Procedure NA at night. Visibility reduction by helicopters NA. Use Evergreen altimeter setting; when not received, use Mobile Rgnl altimeter setting and increase all MDA 20 feet.

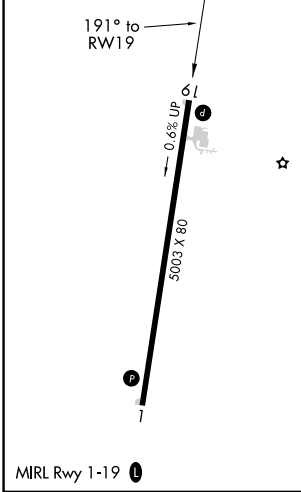
**▲** NA

MISSED APPROACH: Climb to 2000 direct WAKVA and hold.

|                            |   |                       |
|----------------------------|---|-----------------------|
| GZH ASOS<br><b>133.425</b> | HOUSTON CENTER<br><b>127.65 285.475</b> | CTAF<br><b>122.90</b> |
|----------------------------|---|-----------------------|



|         |         |
|---------|---------|
| ELEV 62 | TDZE 39 |
|---------|---------|



|          |                          |  |                        |                         |
|----------|--------------------------|--|------------------------|-------------------------|
| 2000     | WAKVA                    | VGSi and descent angles not coincident (VGSi Angle 3.00/TCH 39). |                        | ETIBY                   |
| ↑        | ✧                        | CEXUK  | ← 191°                 | 2000                    |
|          |                          | ITCIB 3.5 NM to RW19   |                        | Procedure Turn NA       |
|          |                          | RW19   | 1320                   |                         |
|          |                          | 3.35° TCH 39   |                        |                         |
|          |                          | 3.5 NM   | 2.5 NM                 | 6.6 NM                  |
| CATEGORY | A                        | B  | C                      | D                       |
| LNAV MDA | 1000-1¼<br>961 (1000-1¼) | 1000-1½<br>961 (1000-1½)   | 1000-3                 | 961 (1000-3)            |
| CIRCLING | 1000-1¼<br>938 (1000-1¼) | 1000-1½<br>938 (1000-1½)   | 1000-3<br>938 (1000-3) | 1140-3<br>1078 (1100-3) |

SE-4, 31 OCT 2024 to 28 NOV 2024

SE-4, 31 OCT 2024 to 28 NOV 2024