

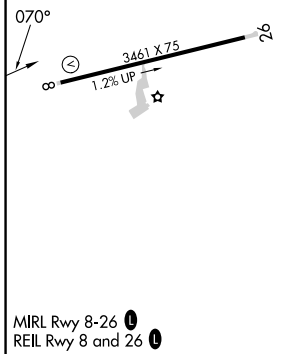
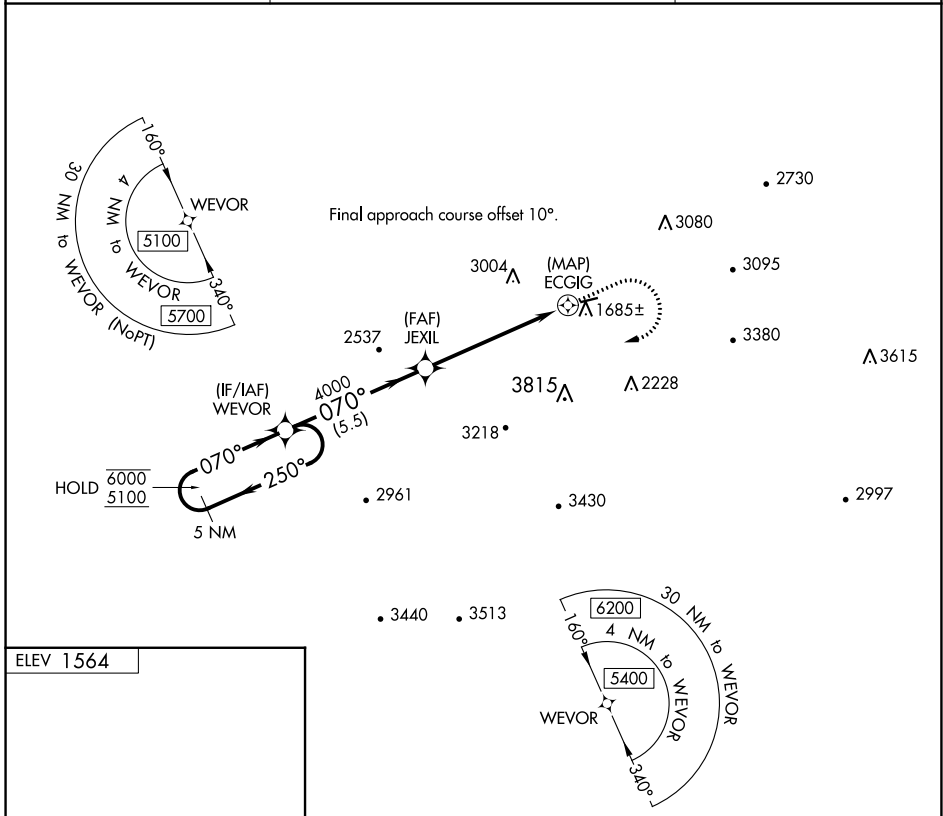
APP CRS	Rwy Idg	N/A
070°	TDZE	N/A
	Apt Elev	1564

RNAV (GPS)-A

TUCKER-GUTHRIE MEML (I35)

RNP APCH.	MISSED APPROACH: Climb to 4200 then climbing right turn to 5100 direct WEVOR and hold.
<p>▼ Circling NA north of Rwy 8-26. Procedure NA at night.</p> <p>▲ Rwy 8 helicopter visibility reduction below 1 SM NA.</p>	

AWOS-3 118.35	INDIANAPOLIS CENTER 124.625 371.925	UNICOM 122.8 (CTAF) 0
-------------------------	---	---------------------------------



5 NM Holding Pattern	VGSIs and descent angles not coincident (VGSIs Angle 5.00/TCH 26).			4200	5100	WEVOR
	WEVOR					
6000 ← 250°		5100 → 070°		070°		
		JEXIL	4000	3.77° TCH 40	ECGIG	
		5.5 NM		5.6 NM		0.5 NM
CATEGORY	A	B	C	D		
CIRCLING	2920-1¼ 1356 (1400-1¼)	2920-1½ 1356 (1400-1½)	3360-3 1796 (1800-3)	NA		

RNAV (GPS)-A

SE-1, 31 OCT 2024 to 28 NOV 2024

SE-1, 31 OCT 2024 to 28 NOV 2024