

WAAS CH <b>50346</b> <b>W35A</b>	APP CRS <b>345°</b>	Rwy Idg TDZE <b>63</b> Apt Elev <b>63</b>	<b>3601</b>
--	------------------------	---	-------------

# RNAV (GPS) RWY 35

AUBURN MUNI (S5 $\emptyset$ )

RNP APCH - GPS.		MISSED APPROACH: Climb to 700 then climbing right turn to 4400 direct CMNDR and hold, continue climb-in-hold to 4400.	
<p><b>▽</b> Circling NA west of Rwy 17-35. Baro-VNAV NA. Rwy 35 helicopter visibility reduction below 1 SM NA. Circling Rwy 17 NA at night. Use Seattle-Tacoma Intl altimeter setting.</p>	SEA ASOS <b>118.0</b>	SEATTLE APP CON <b>123.85</b>	CLNC DEL <b>123.85</b>
			UNICOM <b>122.975 (CTAF) <math>\emptyset</math></b>

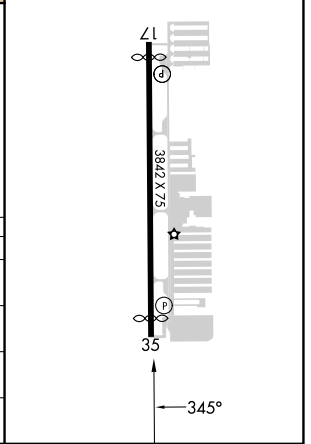
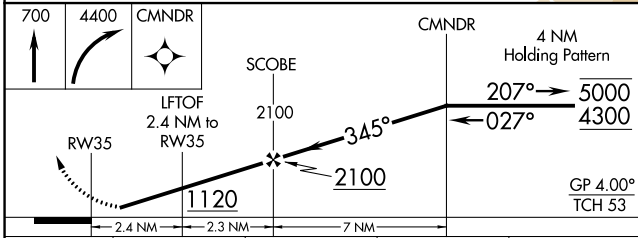


NW-1, 31 OCT 2024 to 28 NOV 2024

NW-1, 31 OCT 2024 to 28 NOV 2024

(IAF) CIDUG Procedure NA for arrivals at CIDUG on V495 southbound.

ELEV 63	TDZE 63
MIRL Rwy 17-35 $\emptyset$	REIL Rwys 17 and 35 $\emptyset$



CATEGORY	A	B	C	D
LPV DA	459-1 $\frac{1}{8}$	396 (400-1 $\frac{1}{8}$ )		NA
LNAV/VNAV DA	702-1 $\frac{3}{4}$	639 (700-1 $\frac{3}{4}$ )		NA
LNAV MDA	740-1	677 (700-1)		NA
CIRCLING	920-1 $\frac{1}{4}$ 857 (900-1 $\frac{1}{4}$ )	1040-1 $\frac{1}{2}$ 977 (1000-1 $\frac{1}{2}$ )		NA