

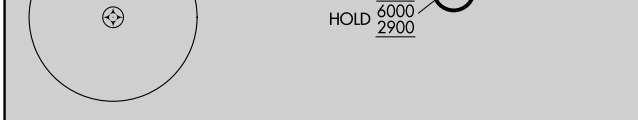
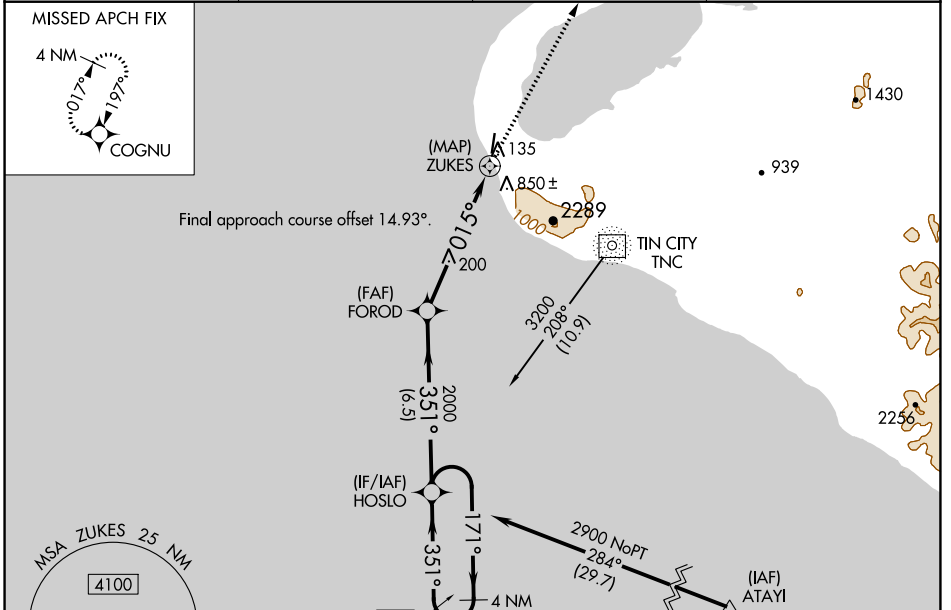
WAAS CH 60943 W36A	APP CRS 015°	Rwy Idg 3990 TDZE 26 Apt Elev 26
--	------------------------	---

RNAV (GPS) RWY 36

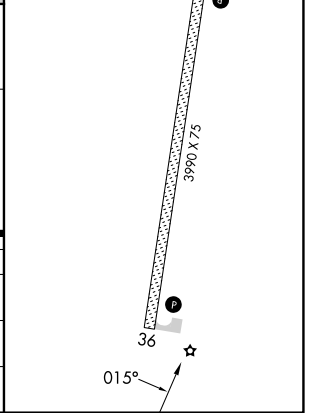
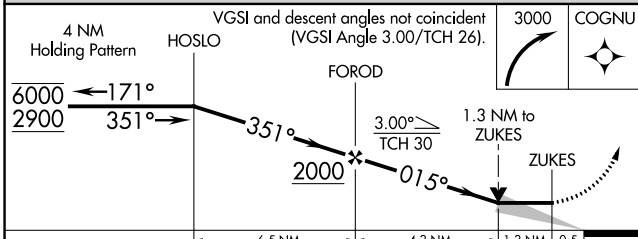
WALES (IWK) (PAIW)

RNP APCH. MISSED APPROACH: Climbing right turn to 3000 direct COGNU and hold.
<p>Circling NA east of Rwy 18-36. -26°C</p>

AWOS-3P 118.525	ANCHORAGE CENTER 133.3 290.4	NOME RADIO 122.6	CTAF 123.0
---------------------------	--	----------------------------	----------------------



ELEV 26	TDZE 26
MIRL Rwy 18-36	
REL Rwys 18 and 36	



CATEGORY	A	B	C	D
LP MDA	460-1	434 (500-1)	460-1¼	434 (500-1¼)
LNAV MDA	920-1¼	894 (900-1¼)	920-2½	894 (900-2½)
CIRCLING	920-1¼	894 (900-1¼)	920-2¾ 894 (900-2¾)	920-3 894 (900-3)

AK, 31 OCT 2024 to 26 DEC 2024

AK, 31 OCT 2024 to 26 DEC 2024