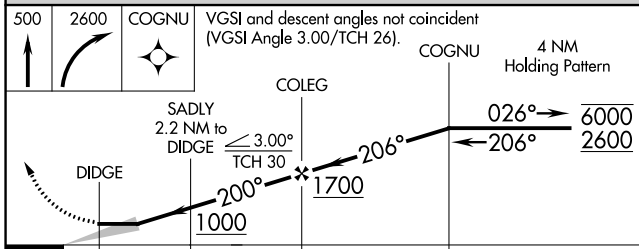
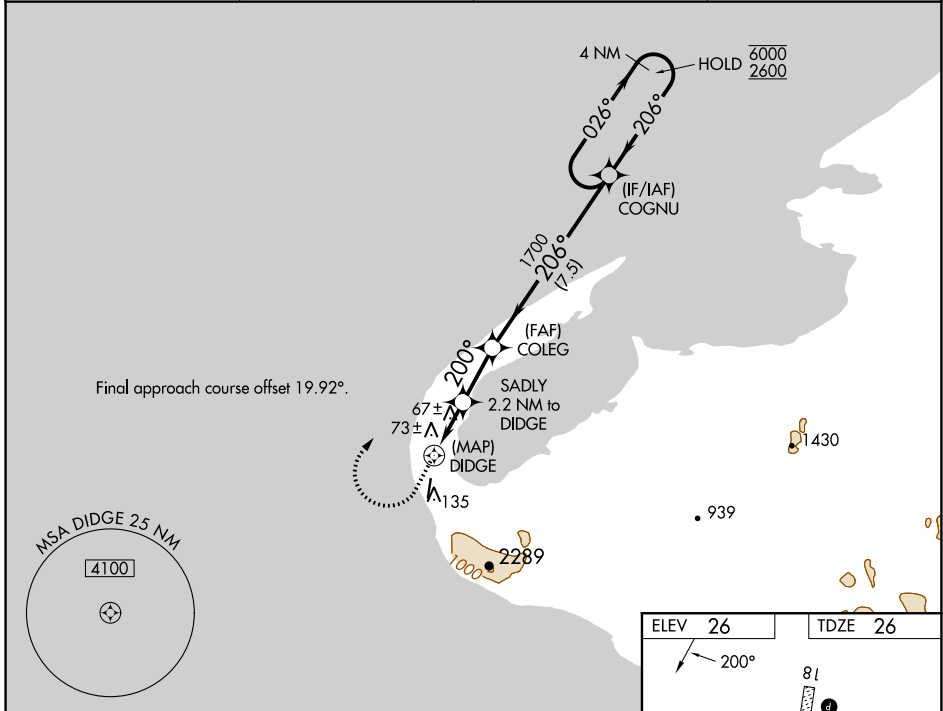


WAAS CH 57942 W18A	APP CRS 200°	Rwy Idg 3990 TDZE 26 Apt Elev 26
----------------------------------------	------------------------	-------------------------------------------------------------

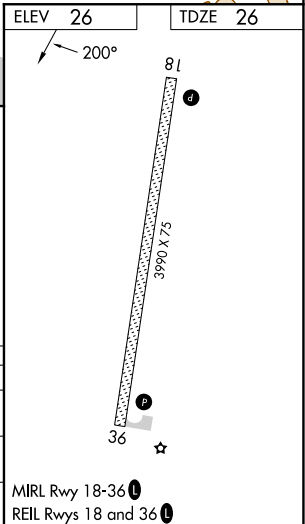
RNAV (GPS) RWY 18

WALES (IWK) (PAIW)

RNP APCH. -26°C Circling NA east of Rwy 18-36.		MISSED APPROACH: Climb to 500 then climbing right turn to 2600 direct COGNU and hold.	
AWOS-3P 118.525	ANCHORAGE CENTER 133.3 290.4	NOME RADIO 122.6	CTAF 123.0



500	2600	COGNU	VGSI and descent angles not coincident (VGSI Angle 3.00/TCH 26).	
COLEG		COGNU	4 NM Holding Pattern	
DIDGE		SADLY 2.2 NM to DIDGE	$\leq 3.00^\circ$ TCH 30°	
0.8	2.2 NM	2.2 NM	7.5 NM	
CATEGORY	A	B	C	D
LP MDA	340-1 314 (400-1)			
LNAV MDA	640-1 614 (700-1)		640-1 $\frac{3}{4}$ 614 (700-1 $\frac{3}{4}$)	
CIRCLING	640-1 614 (700-1)		640-1 $\frac{3}{4}$ 614 (700-1 $\frac{3}{4}$)	



AK, 31 OCT 2024 to 26 DEC 2024

AK, 31 OCT 2024 to 26 DEC 2024