

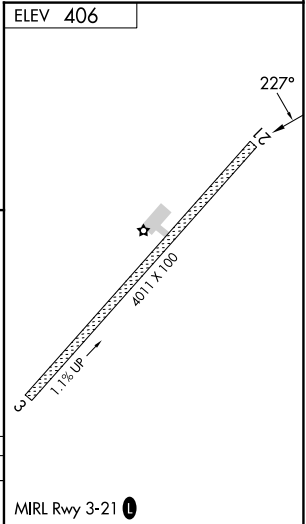
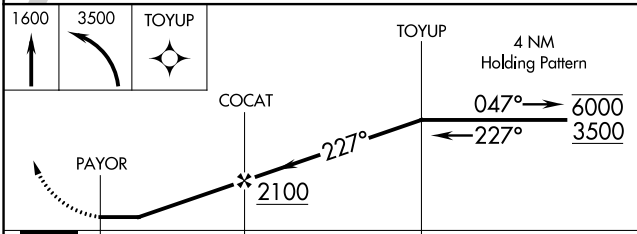
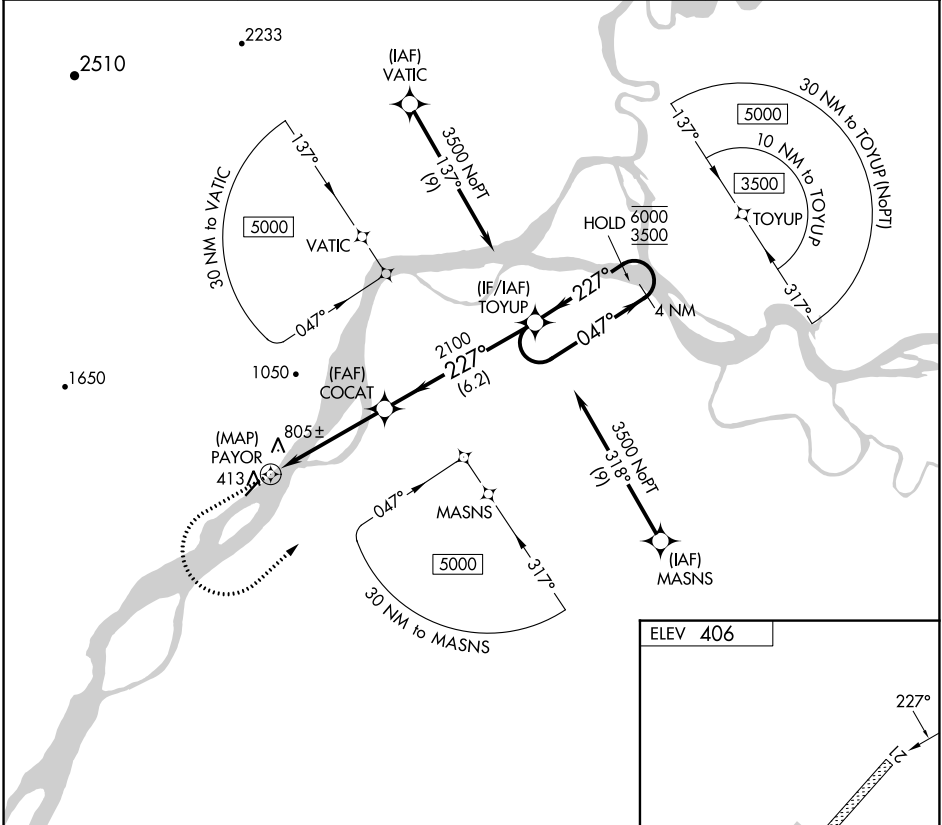
RNAV (GPS)-A NULATO (NUL) (PANU)

APP CRS 227°	Rwy Idg TDZE Apt Elev	N/A N/A 406
------------------------	-----------------------------	--

RNP APCH - GPS.
 ⚠ Rwy 3 and 21 helicopter visibility reduction below 1 SM NA.
 Procedure NA at night.

MISSED APPROACH: Climb to 1600 then climbing left turn to 3500 direct TOYUP and hold.

AWOS-3P 118.0	ANCHORAGE CENTER 127.0 290.2	FAIRBANK RADIO 122.2	UNICOM 122.9
-------------------------	--	--------------------------------	------------------------



CATEGORY	A	B	C	D
CIRCLING	1120-1 714 (800-1)	1220-1¼ 814 (900-1¼)	1280-2½ 874 (900-2½)	1480-3 1074 (1100-3)

AK, 31 OCT 2024 to 26 DEC 2024

AK, 31 OCT 2024 to 26 DEC 2024