

# RNAV (GPS) RWY 3

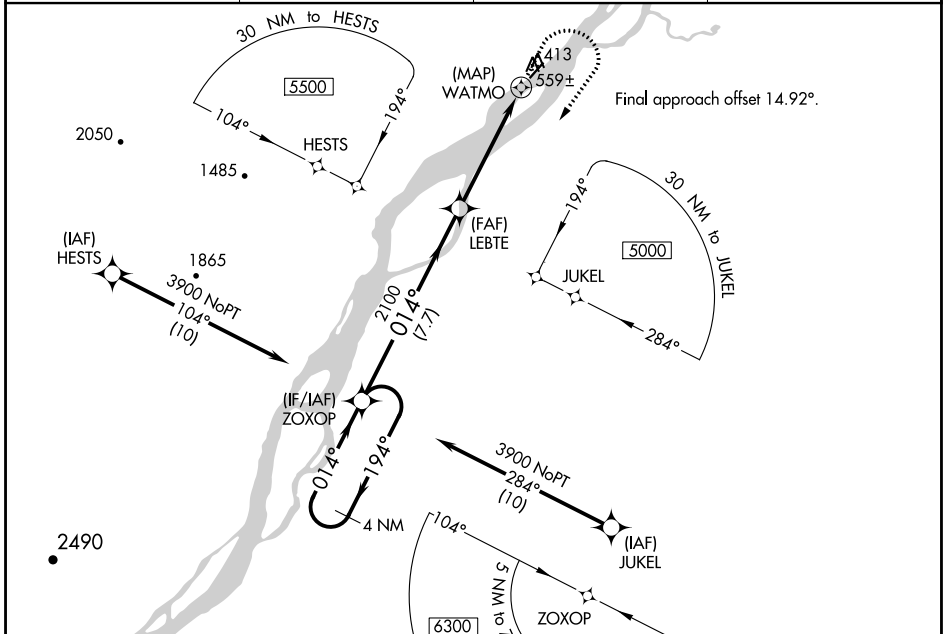
NULATO (NUL) (PANU)

APP CRS <b>014°</b>	Rwy Idg <b>4011</b>
	TDZE <b>398</b>
	Apt Elev <b>406</b>

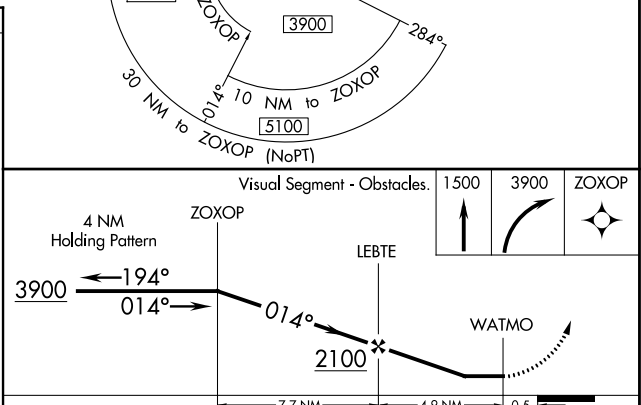
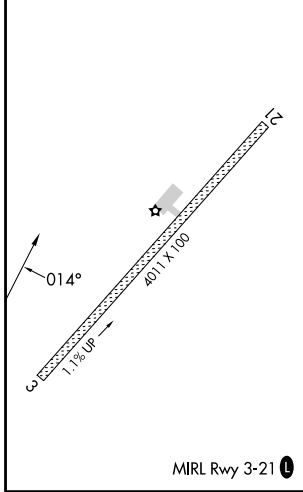
RNP APCH - GPS.  
 ▼ Rwy 3 helicopter visibility reduction below 1 SM NA.  
 ▲ NA Procedure NA at night.

MISSED APPROACH: Climb to 1500 then climbing right turn to 3900 direct ZOXOP and hold.

AWOS-3P <b>118.0</b>	ANCHORAGE CENTER <b>127.0 290.2</b>	FAIRBANK RADIO <b>122.2</b>	UNICOM <b>122.9</b>
-------------------------	--	--------------------------------	------------------------



ELEV 406	TDZE 398
----------	----------



CATEGORY	A	B	C	D
LNAV MDA	920-1	522 (600-1)	920-1½	522 (600-1½)
<input checked="" type="checkbox"/> CIRCLING	1280-1¼ 874 (900-1¼)	1380-1½ 974 (1000-1½)	1420-3 1014 (1100-3)	1620-3 1214 (1300-3)

AK, 31 OCT 2024 to 26 DEC 2024

AK, 31 OCT 2024 to 26 DEC 2024