

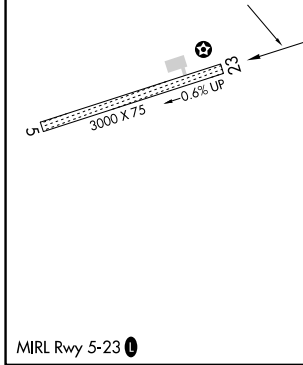
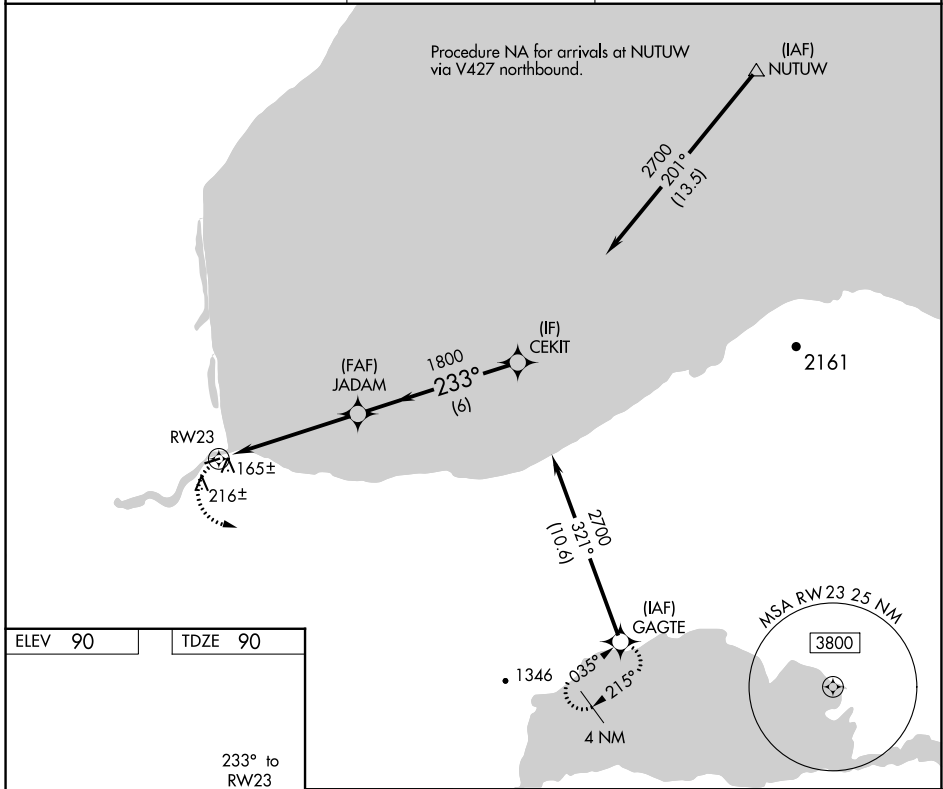
APP CRS 233°	Rwy Idg TDZE Apt Elev	3000 90 90
------------------------	-----------------------------	---------------------------------------

RNAV (GPS) RWY 23

IGIUGIG (IGG)(PAIG)

RNP APCH-GPS.	MISSED APPROACH: Climbing left turn to 4000 direct GAGTE and hold.
<p>▼</p> <p>▲</p> <p>If local altimeter setting not received, use Iliamna altimeter setting and increase all MDAs 120 feet.</p>	

AWOS-3P 119.925	ANCHORAGE CENTER 118.8	CTAF 122.8
---------------------------	----------------------------------	----------------------



4000	GAGTE	* VDP NA with Iliamna altimeter setting.	CEKIT
			Procedure Turn NA
		JADAM	2700
		1800	
		233°	
		1.3	3.9 NM
		6 NM	
CATEGORY	A	B	C
LNAV MDA	440-1	350 (400-1)	NA
CIRCLING	580-1 490 (500-1)	660-1 570 (600-1)	NA

AK, 05 SEP 2024 to 31 OCT 2024

AK, 05 SEP 2024 to 31 OCT 2024