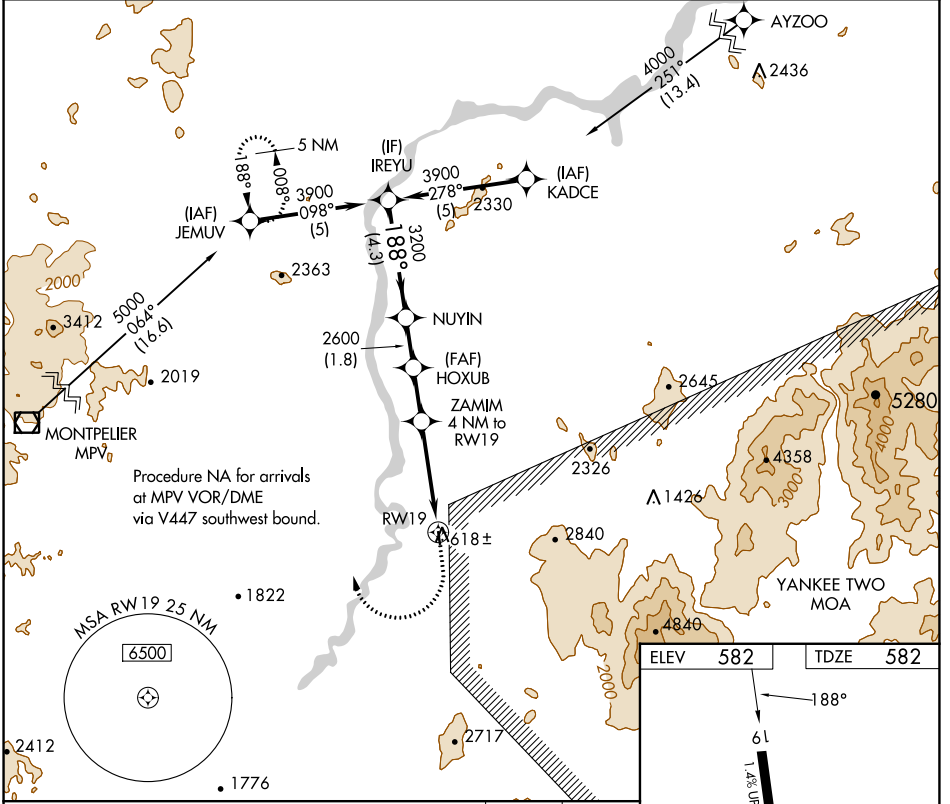


APP CRS	Rwy Idg	2511
188°	TDZE	582
	Apt Elev	582

RNAV (GPS) RWY 19

DEAN MEML (5B9)

NA -28°C	DME/DME RNP-0.3 NA. Procedure NA at night. Visibility reduction by helicopters NA. Use Lebanon altimeter setting; if not received, use Barre-Montpelier, VT altimeter setting and increase all MDAs 80 feet.		MISSED APPROACH: Climbing right turn to 4000 direct JEMUV and hold.
	LEB ASOS 118.65	BOSTON CENTER 135.7 282.2	



NE-1, 03 OCT 2024 to 31 OCT 2024

NE-1, 03 OCT 2024 to 31 OCT 2024

