

| | | | |
|---------------------------------|------------------------|-----------------------------|---|
| WAAS CH 72729 W19A | APP CRS 188° | Rwy Idg TDZE Apt Elev | 5144 237 237 |
|---------------------------------|------------------------|-----------------------------|---|

RNAV (GPS) RWY 19

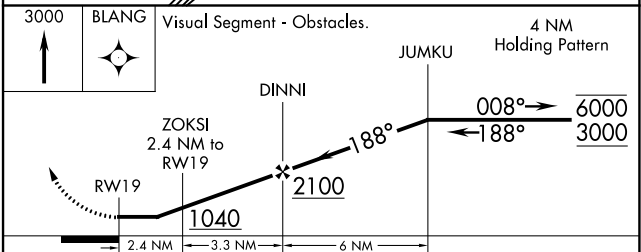
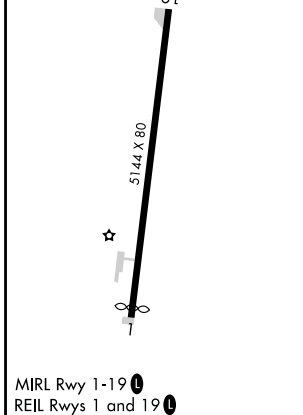
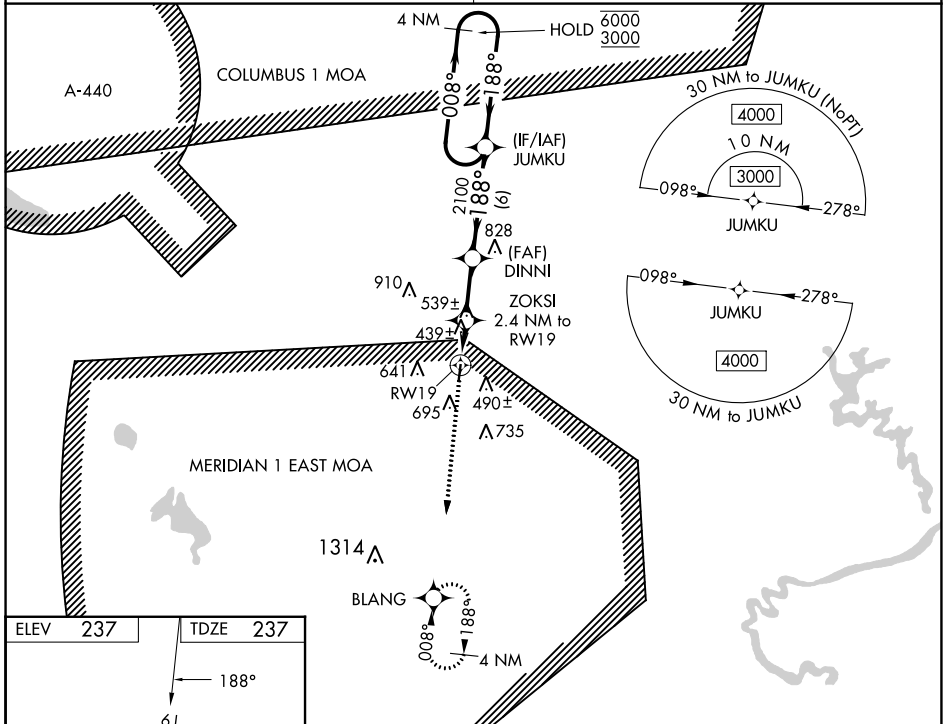
NORTH PICKENS (3M8)

RNP APCH.

▼ Procedure NA at night. Rwy 19 helicopter visibility reduction below 1 SM NA.
 ▲NA Obtain local altimeter setting on CTAF; when not received, use Tuscaloosa altimeter setting; increase all MDAs 80 feet; increase LP and RNAV Cat C/D visibility ¼ SM; increase Circling visibility all Cats ½ SM.

MISSED APPROACH: Climb to 3000 direct BLANG and hold.

| | |
|--|----------------------|
| COLUMBUS APP CON ★ 135.6 323.275 | CTAF 122.9 |
|--|----------------------|



| CATEGORY | A | B | C | D |
|----------|--------|-------------|-------------------------|-------------------------|
| LP MDA | 700-1 | 463 (500-1) | 700-1⅓ | 463 (500-1⅓) |
| LNAV MDA | 800-1 | 563 (600-1) | 800-1⅓ | 563 (600-1⅓) |
| CIRCLING | 1000-1 | 763 (800-1) | 1000-2¼ 763 (800-2¼) | 1040-2½ 803 (900-2½) |

SE-4, 03 OCT 2024 to 31 OCT 2024

SE-4, 03 OCT 2024 to 31 OCT 2024