

WAAS CH <b>49203</b> W26A	APP CRS <b>256°</b>	Rwy Idg TDZE <b>4651</b> Apt Elev <b>4900</b>
---------------------------------	------------------------	---

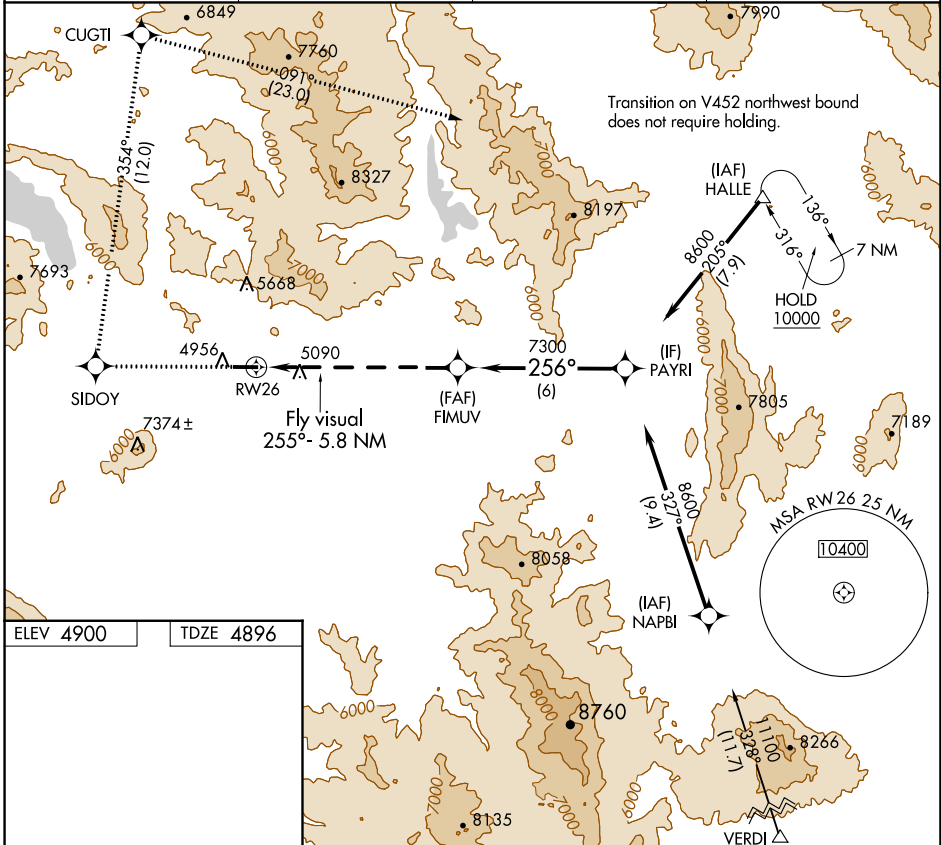
# RNAV (GPS) Z RWY 26

NERVINO (002)

**NA** Use Reno/Stead altimeter setting; when not received, use Reno/Tahoe Intl altimeter setting and increase DA 180 feet.  
**13°C** DME/DME RNP -0.3 NA.  
 Helicopter visibility reduction below 3/4 SM not authorized.

**MISSED APPROACH:** Climb to 10000 direct SIDOY and right turn on track 354° to CUGTI and right turn on track 091° to HALLE and hold.

AWOS-2 <b>119.35</b>	RTS AWOS-3 <b>135.175</b>	NORCAL APP CON <b>126.3 353.9</b>	UNICOM <b>122.8 (CTAF) 0</b>
-------------------------	------------------------------	--------------------------------------	---------------------------------



SW-2, 31 OCT 2024 to 28 NOV 2024

SW-2, 31 OCT 2024 to 28 NOV 2024

ELEV 4900	TDZE 4896
-----------	-----------

Scale: 4651 X 75

Fly visual 255°- 5.8 NM

MIRL Rwy 8-26 0

10000	SIDOY	CUGTI	HALLE	VGSJ and RNAV glidepath not coincident (VGSJ Angle 3.50/TCH 50).
↑	↻ 354°	↻ 091°	△	
Fly visual 255°- 5.8 NM RWY26		FIMUV 7300	PAYRI 8600	
← 7.2 NM		↘ 256° 7300	↘ 8600	GP 3.00° TCH 55
CATEGORY	A	B	C	D
LPV DA	6787-2	1891 (1900-2)	6787-3	1891 (1900-3)