

APP CRS	Rwy Idg	<b>4651</b>
<b>267°</b>	TDZE	<b>4896</b>
	Apt Elev	<b>4900</b>

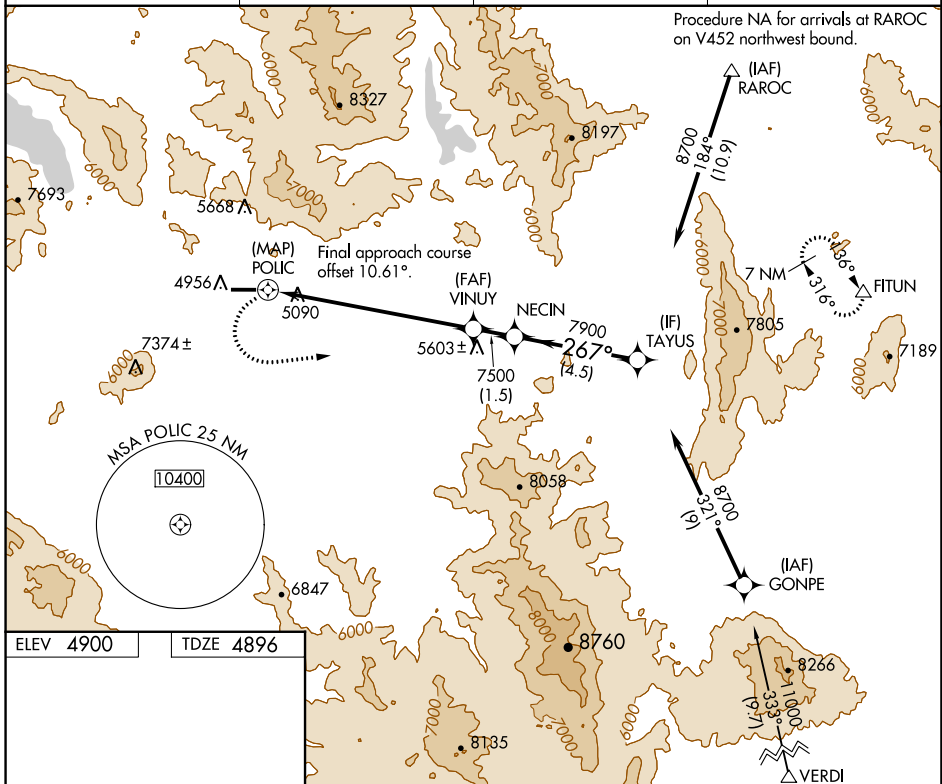
# RNAV (GPS) Y RWY 26

NERVINO (O02)

**Procedure NA at night. Use Reno/Stead altimeter setting; when not received, use Reno/Tahoe Intl altimeter setting and increase all MDA 180 feet. DME/DME RNP- 0.3 NA. 8, 26 Rwy helicopter visibility reduction below 1 SM NA.**

**MISSED APPROACH:** Climbing left turn to 10000 direct FITUN and hold.

<b>AWOS-2</b> <b>119.35</b>	<b>RTS AWOS-3</b> <b>135.175</b>	<b>NORCAL APP CON</b> <b>126.3 353.9</b>	<b>UNICOM</b> <b>122.8 (CTAF)</b>
--------------------------------	-------------------------------------	---	--------------------------------------



ELEV 4900	TDZE 4896
-----------	-----------

267°

4651 X 75

MIRL Rwy 8-26

10000	FITUN	Visual Segment - Obstacles.		TAYUS
	△	VINUY	NECIN	8700
		POLIC	7500	7900
		0.5	7.5 NM	1.5 NM
			4.5 NM	
CATEGORY	A	B	C	D
LNAV MDA	7300-1¼ 2404 (2400-1¼)	7300-1½ 2404 (2400-1½)	7300-3	2404 (2400-3)
CIRCLING	7300-1¼ 2400 (2400-1¼)	7300-1½ 2400 (2400-1½)	7300-3	2400 (2400-3)

SW-2, 31 OCT 2024 to 28 NOV 2024

SW-2, 31 OCT 2024 to 28 NOV 2024