

APP CRS	Rwy Idg	5822
357°	TDZE	4382
	Apt Elev	4382

RNAV (GPS) RWY 2

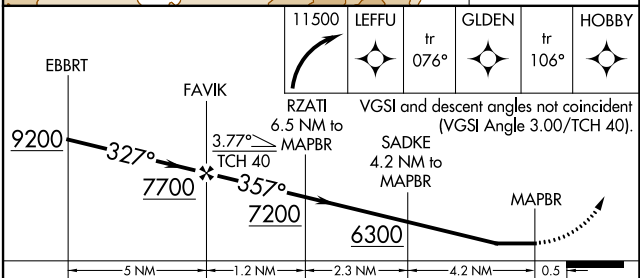
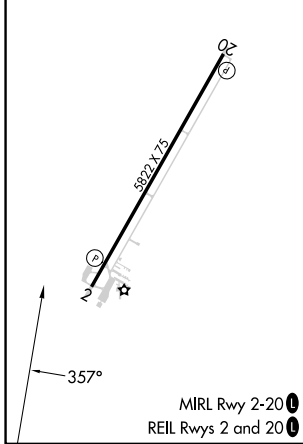
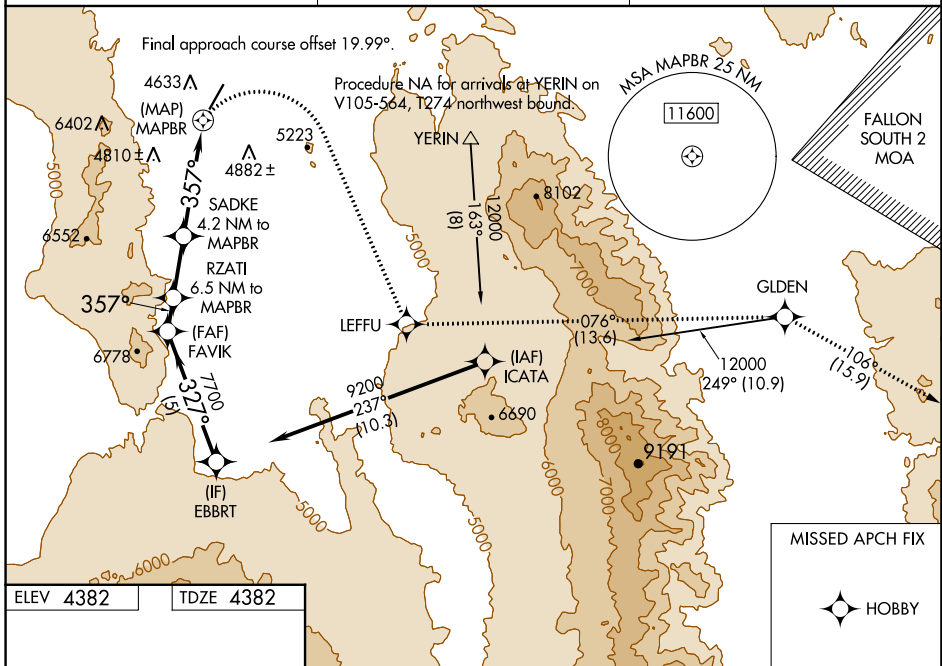
YERINGTON MUNI (O43)

RNP APCH - GPS.

NA Procedure NA at night. Rwy 2 helicopter visibility reduction below 1 SM NA. Circling NA west of Rwy 2-20. Use SPZ altimeter setting, when not received, use RNO altimeter setting and increase all MDAs 40 feet and LNAV* visibility Cat C 1/2 SM.

MISSED APPROACH: (Do not exceed 210K until LEFFU) Climbing right turn to 11500 direct LEFFU and on track 076° to GLDEN and on track 106° to HOBBY.
 *Missed approach requires minimum climb of 276 feet per NM to 9300.

SPZ AWOS-2 120.475	OAKLAND CENTER 125.75 284.65	AUNICOM 122.8 (CTAF)
------------------------------	--	--------------------------------



CATEGORY	A	B	C	D
LNAV MDA*	5040-1	658 (700-1)	5040-1 1/8 658 (700-1 1/8)	NA
LNAV MDA	6200-1 1/4 1818 (1900-1 1/4)	6200-1 1/2 1818 (1900-1 1/2)	6200-3 1818 (1900-3)	NA
CIRCLING	6200-1 1/4 1818 (1900-1 1/4)	6200-1 1/2 1818 (1900-1 1/2)	6200-3 1818 (1900-3)	NA

SW-4, 31 OCT 2024 to 28 NOV 2024

SW-4, 31 OCT 2024 to 28 NOV 2024