

WAAS CH <b>90531</b> <b>W07A</b>	APP CRS <b>068°</b>	Rwy Idg TDZE Apt Elev	<b>5001</b> <b>653</b> <b>653</b>
--	------------------------	-----------------------------	---

# RNAV (GPS) RWY 7

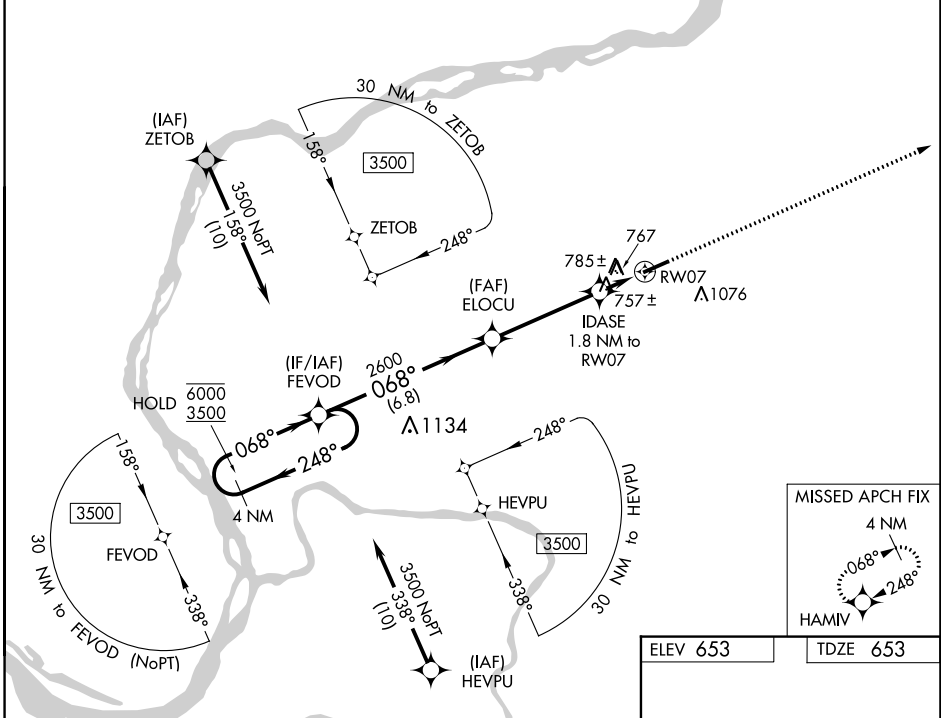
MARION-CRITTENDEN COUNTY JAMES C JOHNSON RGNL (GDA)

RNP APCH - GPS.

**▼**  
**▲** Rwy 7 helicopter visibility reduction below 3/4 SM NA.

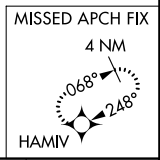
**MISSED APPROACH:**  
Climb to 3500 direct  
HAMIV and hold.

AWOS-3P <b>118.15</b>	MEMPHIS CENTER <b>133.65 292.15</b>	CTAF <b>122.9</b>
--------------------------	--	----------------------

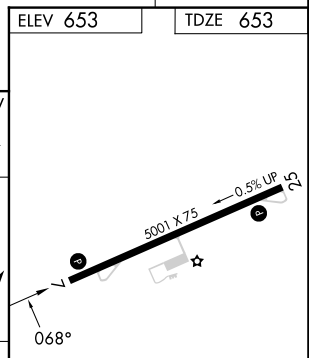
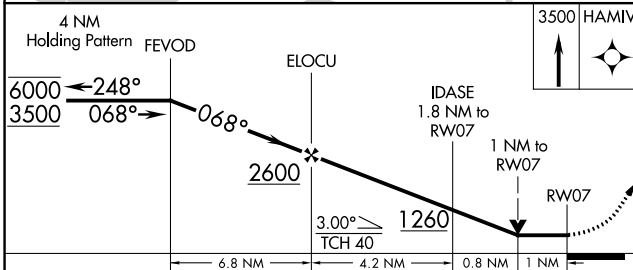


SE-1, 31 OCT 2024 to 28 NOV 2024

SE-1, 31 OCT 2024 to 28 NOV 2024



ELEV 653	TDZE 653
----------	----------



CATEGORY	A	B	C	D
LP MDA	1020-1		367 (400-1)	
LNAV MDA	1040-1	387 (400-1)	1040-1 1/8	387 (400-1 1/8)
<b>C</b> CIRCLING	1160-1 507 (600-1)	1360-1 707 (800-1)	1380-2 727 (800-2)	1380-2 1/4 727 (800-2 1/4)

MIRL Rwy 7-25 **1**  
REIL Rwys 7 and 25 **1**

# RNAV (GPS) RWY 7