

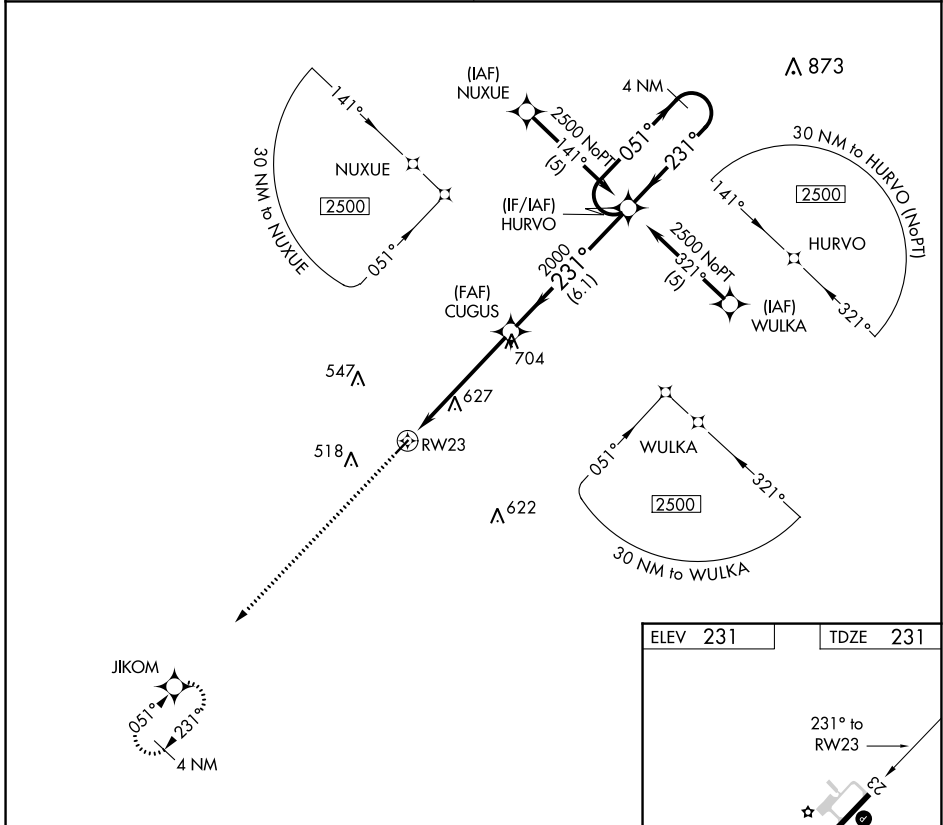
APP CRS	Rwy Idg	3603
231°	TDZE	231
	Apt Elev	231

RNAV (GPS) RWY 23

BAMBERG COUNTY (99N)

RNP APCH.	<p>Procedure NA at night.</p> <p>△ NA Rwy 23 helicopter visibility reduction below 1 SM NA.</p> <p>Use Orangeburg Muni altimeter setting; when not received, procedure NA.</p>	MISSED APPROACH: Climb to 2500 direct JIKOM and hold.
-----------	--	---

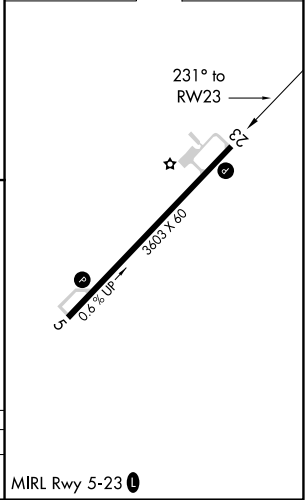
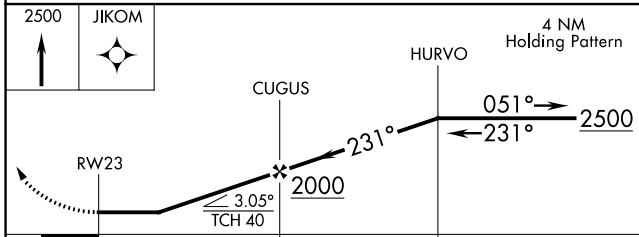
COLUMBIA APP CON 124.15 338.2	UNICOM 122.8 (CTAF) 0
---	---------------------------------



SE-2, 31 OCT 2024 to 28 NOV 2024

SE-2, 31 OCT 2024 to 28 NOV 2024

ELEV 231	TDZE 231
----------	----------



CATEGORY	A	B	C	D
LNVA MDA	920-1	689 (700-1)	NA	