

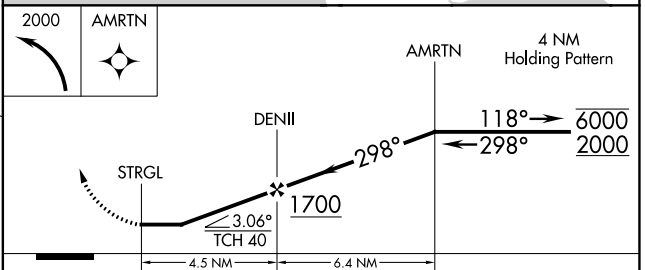
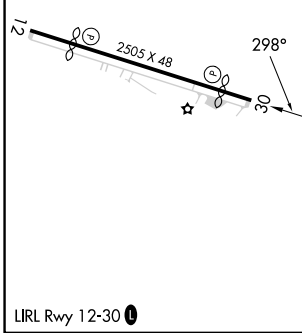
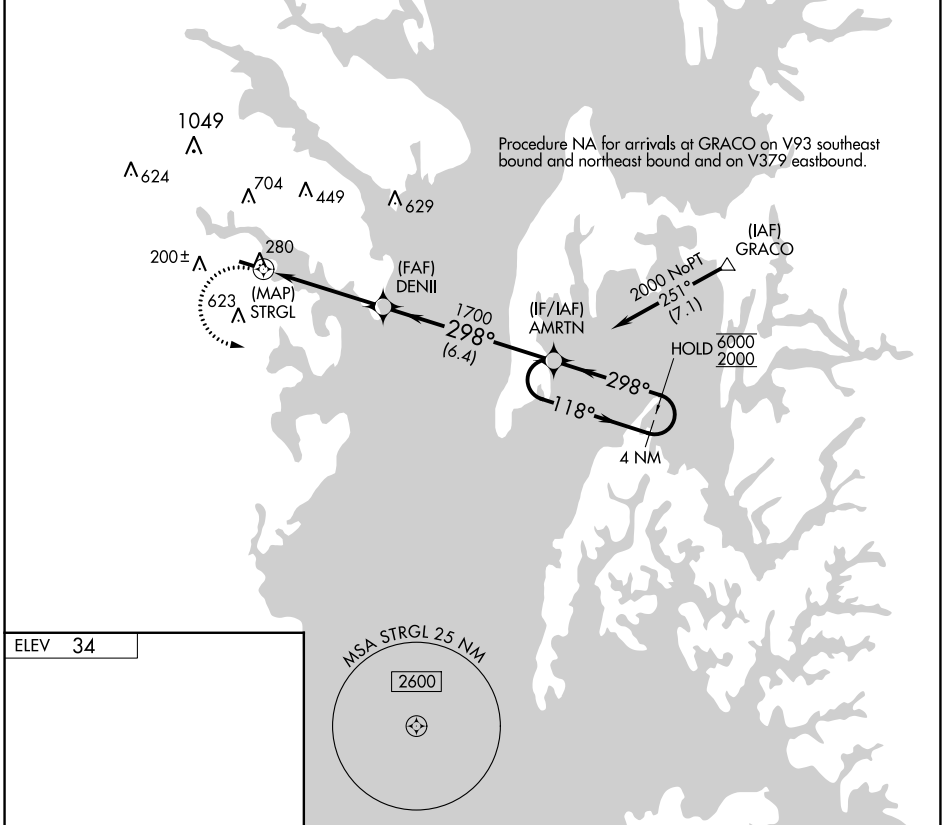
APP CRS <b>298°</b>	Rwy Idg TDZE Apt Elev	<b>N/A</b> <b>N/A</b> <b>34</b>
------------------------	-----------------------------	---------------------------------------

# RNAV (GPS)-A

LEE (ANP)

RNP APCH-GPS.	Procedure NA at night. Rwy 12, and 30 helicopter visibility reduction below 1 SM NA. Use Baltimore/Washington Intl Thurgood Marshall altimeter setting.	MISSED APPROACH: Climbing left turn to 2000 direct AMRTN and hold.
Procedure NA		

BWI ASOS <b>115.1 127.8</b>	POTOMAC APP CON <b>119.7 290.475</b>	CTAF <b>122.9</b>
--------------------------------	---	----------------------



CATEGORY	A	B	C	D
CIRCLING	660-1	626 (700-1)		NA

NE-3, 08 AUG 2024 to 05 SEP 2024

NE-3, 08 AUG 2024 to 05 SEP 2024