

VORTAC BRV 114.5	APP CRS 314°	Rwy Idg TDZE 6000 196
Chan 92		Apt Elev 219

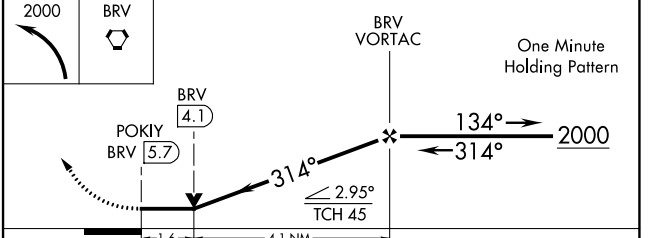
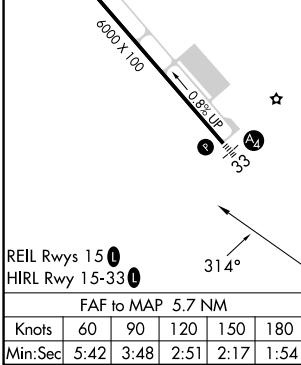
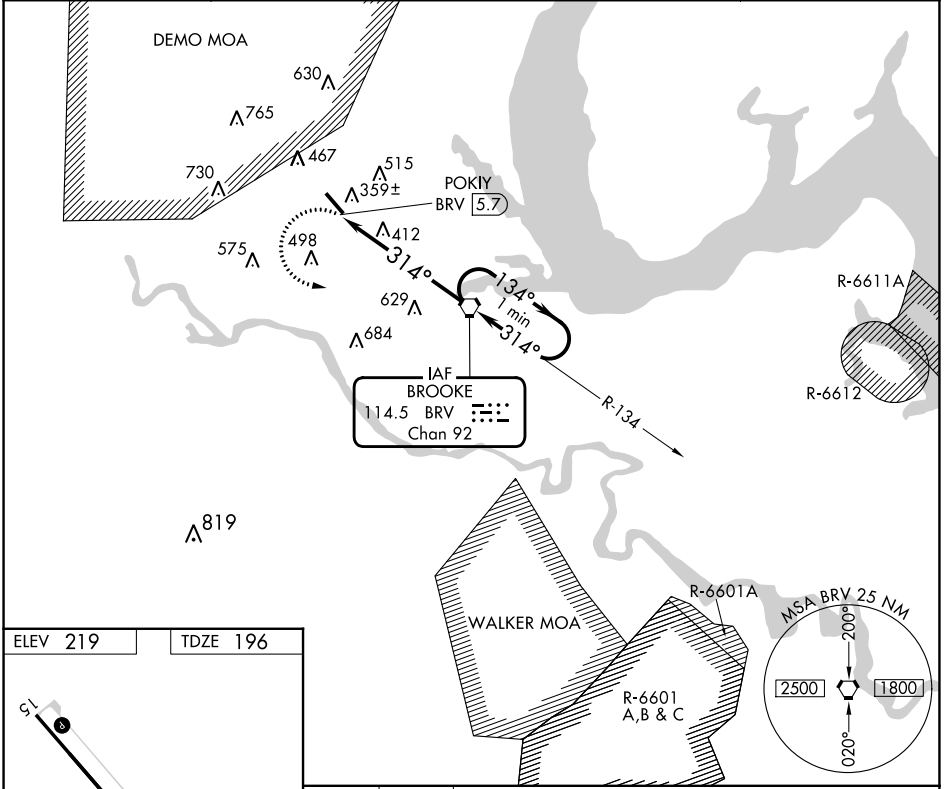
VOR RWY 33
STAFFORD RGNL (R.MN)

▼ Inoperative table does not apply to Cat C. Circling Rwy 15 NA at night.

MALS 

MISSED APPROACH: Climbing left turn to 2000 direct BRV VORTAC and hold.

AWOS-3 126.325	QUANTICO APP CON * 127.05 290.375	GCO 135.075	UNICOM 122.725 (CTAF) 0
--------------------------	---	-----------------------	-----------------------------------



CATEGORY	A	B	C	D
S-33	740- $\frac{3}{4}$ 544 (600- $\frac{3}{4}$)		740-1 $\frac{1}{2}$ 544 (600-1 $\frac{1}{2}$)	740-1 $\frac{3}{4}$ 544 (600-1 $\frac{3}{4}$)
CIRCLING	740-1 521 (600-1)	820-1 601 (700-1)	820-1 $\frac{3}{4}$ 601 (700-1 $\frac{3}{4}$)	1040-2 $\frac{3}{4}$ 821 (900-2 $\frac{3}{4}$)

NE-3, 31 OCT 2024 to 28 NOV 2024

NE-3, 31 OCT 2024 to 28 NOV 2024