

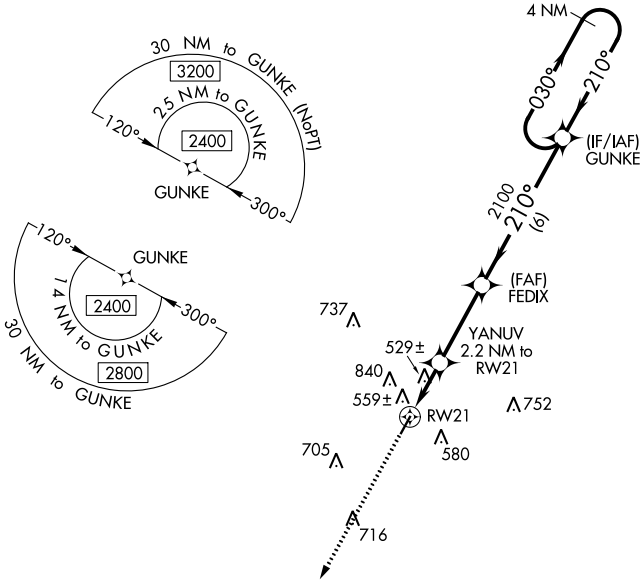
WAAS CH <b>53431</b> <b>W21A</b>	APP CRS <b>210°</b>	Rwy Idg TDZE Apt Elev	<b>4000</b> <b>364</b> <b>364</b>
--	------------------------	-----------------------------	---

**RNAV (GPS) RWY 21**  
WINONA-MONTGOMERY COUNTY (5A.6)

**⚠** Use Grenada altimeter setting; when not received, use Greenwood altimeter setting. Circling NA NW of Rwy 3-21. DME/DME RNP-0.3 NA. Rwy 3, 21 helicopter visibility reduction below 1 SM NA. Procedure NA at night.

**⚠** MISSED APPROACH: Climb to 2500 direct GUCEY and hold.

AWOS-3PT <b>120.175</b>	GNF AWOS-3PT <b>118.025</b>	MEMPHIS CENTER <b>128.5 279.55</b>	CTAF <b>122.9</b> <b>Ⓛ</b>
----------------------------	--------------------------------	---------------------------------------	-------------------------------



SC-4, 31 OCT 2024 to 28 NOV 2024

SC-4, 31 OCT 2024 to 28 NOV 2024

ELEV 364 TDZE 364

MIRL Rwy 3-21 **Ⓛ**

GUCEY 2500

VGSI and descent angles not coincident (VGSI Angle 4.00/TCH 30).

4 NM Holding Pattern

YANUV 2.2 NM to RW21

FEDIX

2100

1080

3.00° TCH 30

CATEGORY	A	B	C	D
LP MDA	860-1	496 (500-1)	860-1 <sup>3</sup> / <sub>8</sub> 496 (500-1 <sup>3</sup> / <sub>8</sub> )	NA
LNAV MDA	900-1	536 (600-1)	900-1 <sup>1</sup> / <sub>2</sub> 536 (600-1 <sup>1</sup> / <sub>2</sub> )	NA
CIRCLING	960-1	596 (600-1)	1100-2 736 (800-2)	NA