

WAAS CH 72834 W19A	APP CRS 191°	Rwy Idg 5001 TDZE 221 Apt Elev 221
--	------------------------	---

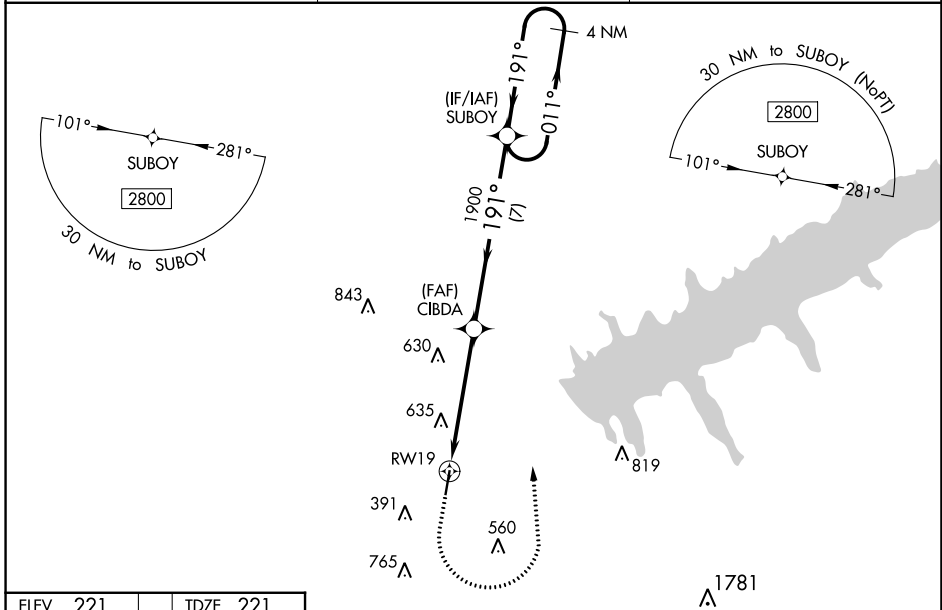
RNAV (GPS) RWY 19

PANOLA COUNTY (PMU)

▼ For uncompensated Baro-VNAV systems, LNAV/VNAV NA below -15°C (5°F) or above 54°C (130°F).
▲ NA DME/DME RNP-0.3 NA. Baro-VNAV and VDP NA when using Oxford altimeter setting.
 When local altimeter setting not received, use Oxford altimeter setting and increase LPV DA to 571, LNAV/VNAV DA to 1116 and all MDA 80 feet, increase LPV all Cats visibility $\frac{3}{8}$ mile, LNAV/VNAV all Cats visibility $\frac{1}{2}$ mile, LNAV Cat B visibility $\frac{1}{4}$ mile, LNAV Cats C, D visibility $\frac{1}{2}$ mile, and Circling Cats B, C visibility $\frac{1}{4}$ mile. Rwy 19 helicopter visibility reduction below $\frac{3}{4}$ SM NA.

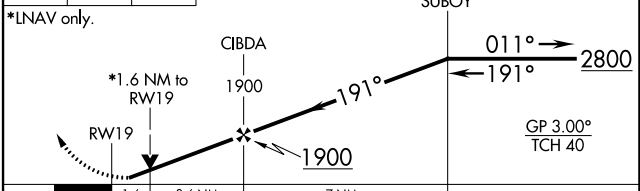
MISSED APPROACH:
 Climb to 1100 then climbing left turn to 2800 direct SUBOY and hold.

AWOS-3PT 118.225	MEMPHIS CENTER 128.5 279.55	UNICOM 122.8 (CTAF) 0
----------------------------	---------------------------------------	---------------------------------

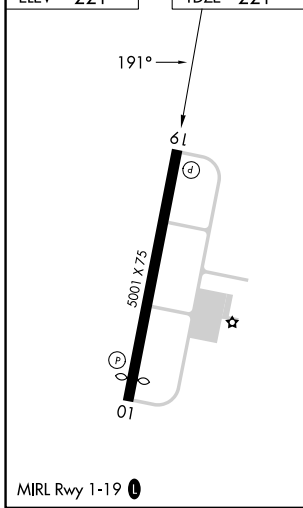


ELEV 221	TDZE 221
-----------------	-----------------

1100 2800 SUBOY
 ↑ ↙ ✦
 VGSI and RNAV glidepath not coincident (VGSI Angle 4.00/TCH 45).
 4 NM Holding Pattern



CATEGORY	A	B	C	D
LPV DA	500- $\frac{7}{8}$		279 (300- $\frac{3}{8}$)	
LNAV/VNAV DA	1045-3		824 (900-3)	
LNAV MDA	940-1	719 (800-2)	940-2	719 (800-2)
C CIRCLING	940-1 719 (800-1)	1000-1 779 (800-1)	1000- $2\frac{1}{4}$ 779 (800- $2\frac{1}{4}$)	1120-3 899 (900-3)



SC-4, 03 OCT 2024 to 31 OCT 2024

SC-4, 03 OCT 2024 to 31 OCT 2024