

WAAS CH 97335 W05A	APP CRS 053°	Rwy Idg 3508 TDZE 604 Apt Elev 610
----------------------------------------	------------------------	---------------------------------------------------------------

RNAV (GPS) RWY 5

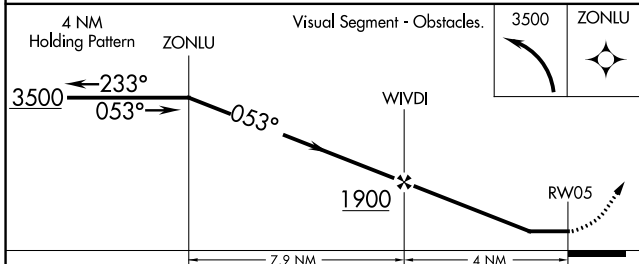
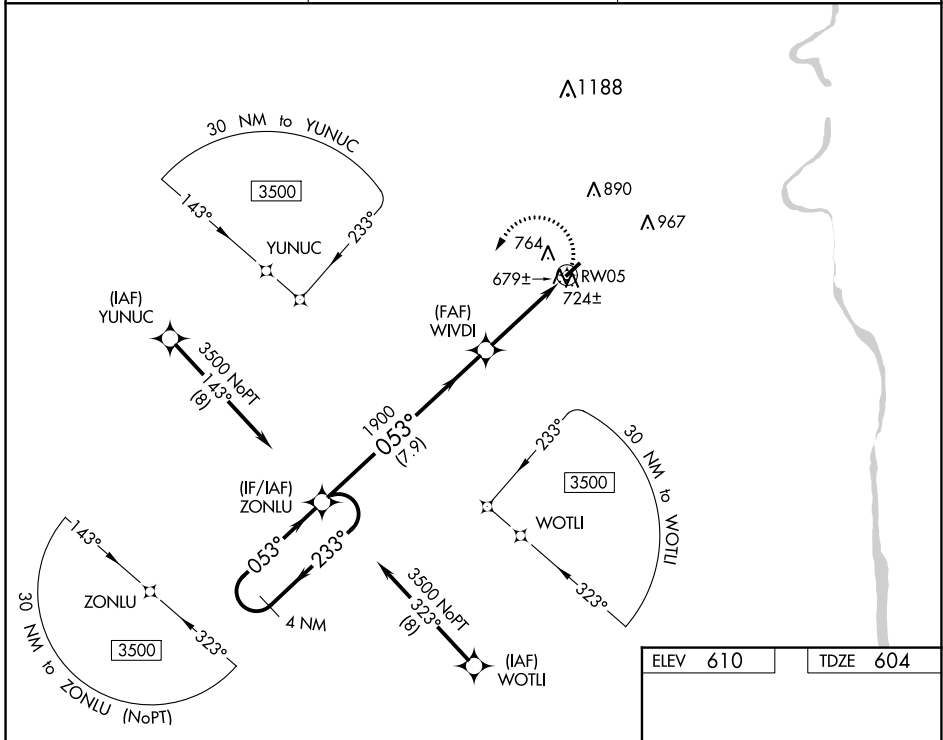
UNION COUNTY, TROY SHELTON FLD (35A)

RNP APCH.

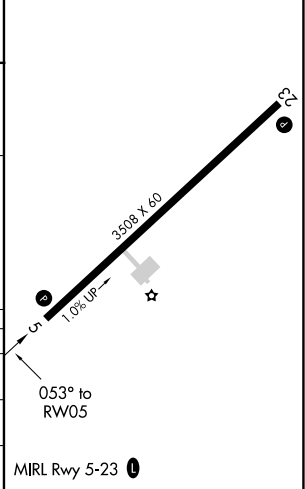
▼ When local altimeter setting not received, use Laurens altimeter setting.
▲ NA Procedure NA at night. Rwy 5 helicopter visibility reduction below 1 SM NA.

MISSED APPROACH: Climbing left turn to 3500 direct ZONLU and hold.

AWOS-3PT 119.45	GREER APP CON ★ 119.4 350.2	UNICOM 122.7 (CTAF) 0
---------------------------	---------------------------------------	---------------------------------



ELEV 610	TDZE 604
----------	----------



CATEGORY	A	B	C	D
LP MDA	1000-1	396 (400-1)		NA
LNAV MDA	1040-1	436 (500-1)		NA
C CIRCLING	1180-1	570 (600-1)		NA

SE-2, 31 OCT 2024 to 28 NOV 2024

SE-2, 31 OCT 2024 to 28 NOV 2024