

APP CRS	Rwy Idg	4156
082°	TDZE	1618
	Apt Elev	1635

RNAV (GPS) RWY 8

LEXINGTON (9S9)

NA When local altimeter setting not received, use Hermiston altimeter setting and increase all MDAs 220 feet, increase LNAV Cat C visibility ½ SM and Circling Cat A/B visibility ¼ SM. Procedure NA at night.
 DME/DME RNP-0.3 NA. Helicopter visibility reduction below 1 SM NA.

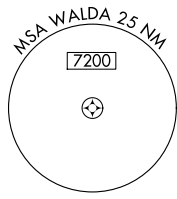
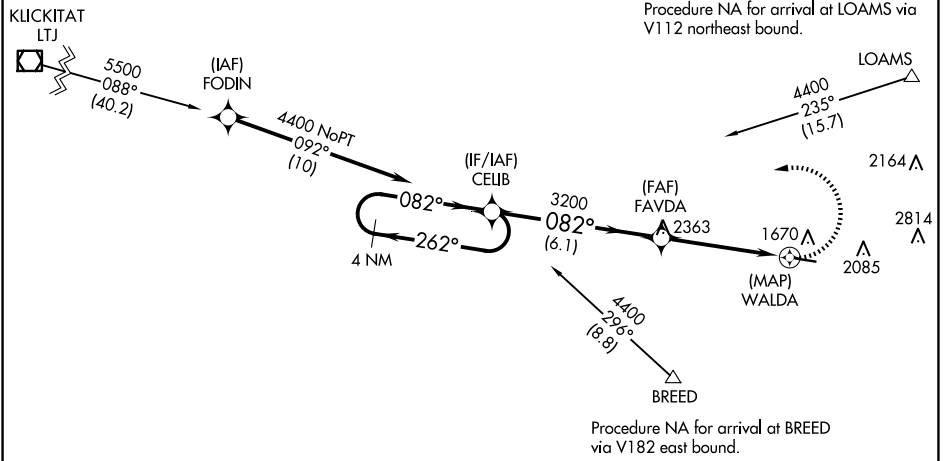
MISSED APPROACH: Climbing left turn to 4400 direct CELIB and hold.

AWOS-3
134.475

SEATTLE CENTER
132.6 269.35

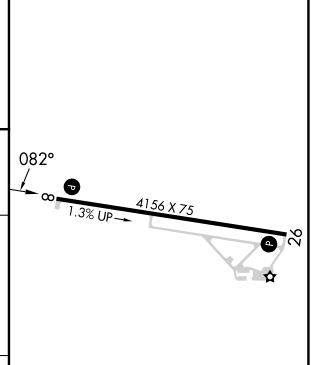
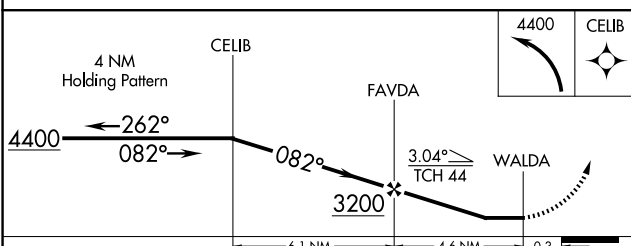
CTAF
122.9

Procedure NA for arrival on LTJ VOR/DME airway radials 032 CW 116.



3562 Δ

ELEV 1635	TDZE 1618
-----------	-----------



CATEGORY	A	B	C	D
LNAV MDA	2120-1	502 (500-1)	2120-1½	502 (500-1½)
CIRCLING	2380-1 745 (800-1)	2460-1¼ 825 (900-1¼)	2700-3 1065 (1100-3)	3180-3 1545 (1600-3)

MIRL Rwy 8-26 **1**
 REIL Rws 8 and 26 **1**

NW-1, 23 JAN 2025 to 20 FEB 2025

NW-1, 23 JAN 2025 to 20 FEB 2025