

WAAS CH <b>56212</b> W17A	APP CRS <b>167°</b>	Rwy Idg <b>8500</b> TDZE <b>194</b> Apt Elev <b>194</b>
---------------------------------	------------------------	---

# RNAV (GPS) RWY 17

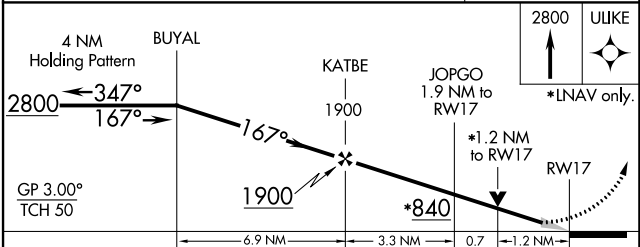
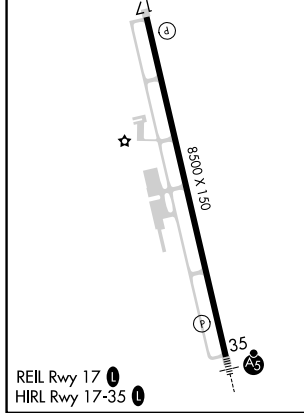
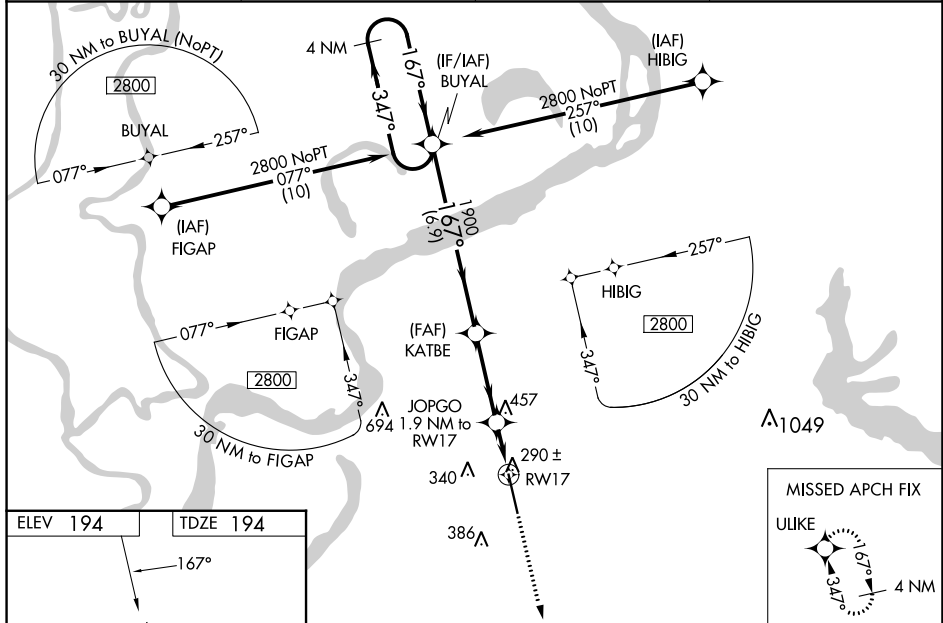
TUNICA MUNI (UTA)

RNP APCH.

**⚠** For uncompensated Baro-VNAV systems, LNAV/VNAV NA below -15°C (5°F) or above 42°C (107°F). For inop ALS, increase LNAV/VNAV visibility all Cats to ½ SM, and LNAV Cats C, D visibility to 1¾ SM. Baro VNAV and VDP NA when using Memphis altimeter setting. When local altimeter setting not received, use Memphis altimeter setting and increase LPV DA to 480, LNAV/VNAV DA to 557, and all MDA 100 feet, increase LNAV/VNAV visibility all Cats to 1 SM, and Circling Cat C visibility to 1¾ SM. For inop ALS when using Memphis altimeter setting, increase LPV all Cats visibility to ¾ SM, LNAV/VNAV all Cats visibility to 1 SM, LNAV Cats C/D visibility to 1¾ SM.

MISSED APPROACH:  
Climb to 2800 direct  
ULIKE and hold.

AWOS-3 <b>118.075</b>	MEMPHIS APP CON <b>119.1 291.6</b>	CLNC DEL <b>118.9</b>	UNICOM <b>123.0 (CTAF) 0</b>
--------------------------	---------------------------------------	--------------------------	---------------------------------



4 NM Holding Pattern BUYAL		KATBE		JOPGO 1.9 NM to RWY 17	
2800 ← 347°		1900		*1.2 NM to RWY 17	
GP 3.00° TCH 50		1900		RWY 17	
← 6.9 NM		← 3.3 NM		← 0.7 NM	
CATEGORY	A	B	C	D	
LPV DA	394-¾		200 (200-¾)		
LNAV/VNAV DA	471-¾		277 (300-¾)		
LNAV MDA	640-¾		446 (500-¾)		640-1½ 446 (500-1½)
CIRCLING	680-1		740-1		760-1½ 760-2
	486 (500-1)		546 (600-1)		566 (600-1½) 566 (600-2)

SC-4, 31 OCT 2024 to 28 NOV 2024

SC-4, 31 OCT 2024 to 28 NOV 2024