

WAAS CH <b>48844</b> <b>W36A</b>	APP CRS <b>358°</b>	Rwy Idg TDZE Apt Elev	<b>3400</b> <b>1131</b> <b>1131</b>
--	------------------------	-----------------------------	---

# RNAV (GPS) RWY 36

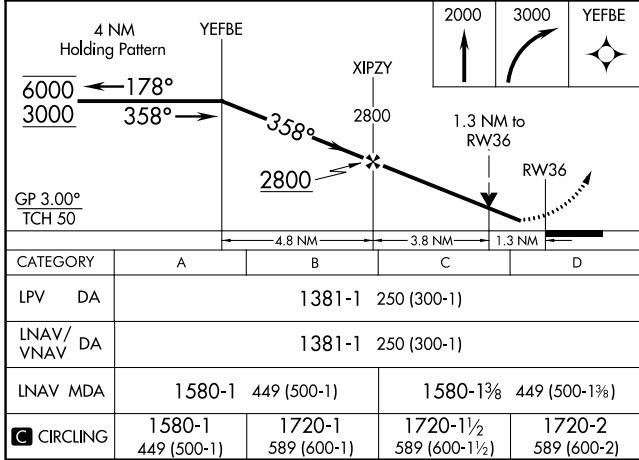
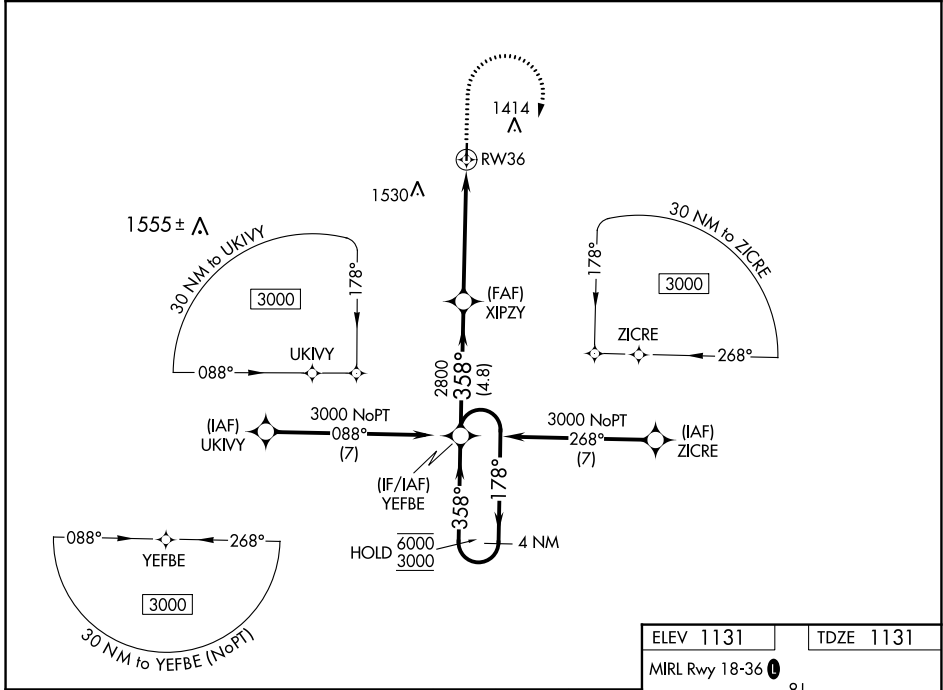
LAMONI MUNI (LWD)

RNP APCH-GPS.

**⚠** Rwy 36 helicopter visibility reduction below 3/4 SM NA. For uncompensated Baro-VNAV systems, LNAV/VNAV NA below -21°C or above 54°C. Circling NA west of Rwy 18-36.

MISSED APPROACH: Climb to 2000, then climbing right turn to 3000 direct YEFBE and hold.

ASOS <b>120.0</b>	MINNEAPOLIS CENTER <b>125.65 306.95</b>	CTAF <b>122.9</b>
----------------------	--	----------------------



ELEV 1131	TDZE 1131
MIRL Rwy 18-36	

A vertical scale bar is provided for reference, showing altitudes of 36, 81, and 3400 X 40. A star symbol is located to the right of the scale.

NC-3, 03 OCT 2024 to 31 OCT 2024

NC-3, 03 OCT 2024 to 31 OCT 2024