

APP CRS 009°	Rwy Idg TDZE Apt Elev	N/A N/A 4044
------------------------	-----------------------------	---

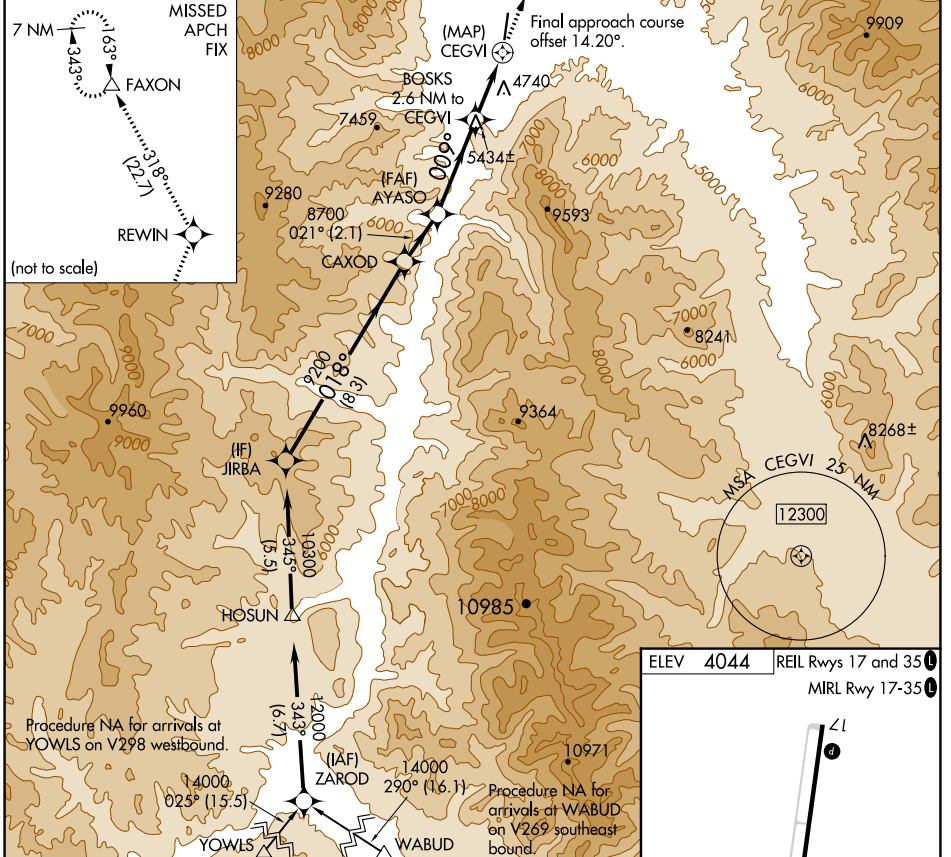
RNAV (GPS)-D

LEMHI COUNTY (SMN)

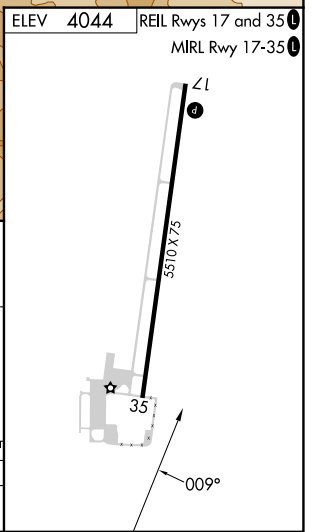
⚠ Circling Rwy 35 NA at night.
⚠ NA DME/DME RNP-0.3 NA.
⚠ -13°C Circling NA for Cat C east of Rwy 17-35.

MISSED APPROACH: Climb to 12000 direct REWIN and on track 318° to FAXON and hold, continue climb-in-hold to 12000.

AWOS-3PT 135.075	SALT LAKE CENTER 132.4 338.3	UNICOM 122.8 (CTAF) 0
----------------------------	--	---------------------------------



JIRBA	CAXOD	AYASO	BOSKS 2.6 NM to CEGVI	CEGVI	FAXON
10300	9200	8700	7020	7020	
8.3 NM		2.1 NM	3.6 NM	2.6 NM	0.5
018°		021°	009°	318°	
12000		12000	12000	12000	12000
REWIN		REWIN	REWIN	REWIN	REWIN
tr		tr	tr	tr	tr
318°		318°	318°	318°	318°
TCH 40		TCH 40	TCH 40	TCH 40	TCH 40
8.91°		8.91°	8.91°	8.91°	8.91°



NW-1, 08 AUG 2024 to 05 SEP 2024

NW-1, 08 AUG 2024 to 05 SEP 2024