

WAAS CH <b>99310</b> <b>W18B</b>	APP CRS <b>179°</b>	Rwy Idg <b>5000</b> TDZE <b>55</b> Apt Elev <b>55</b>
--	------------------------	---

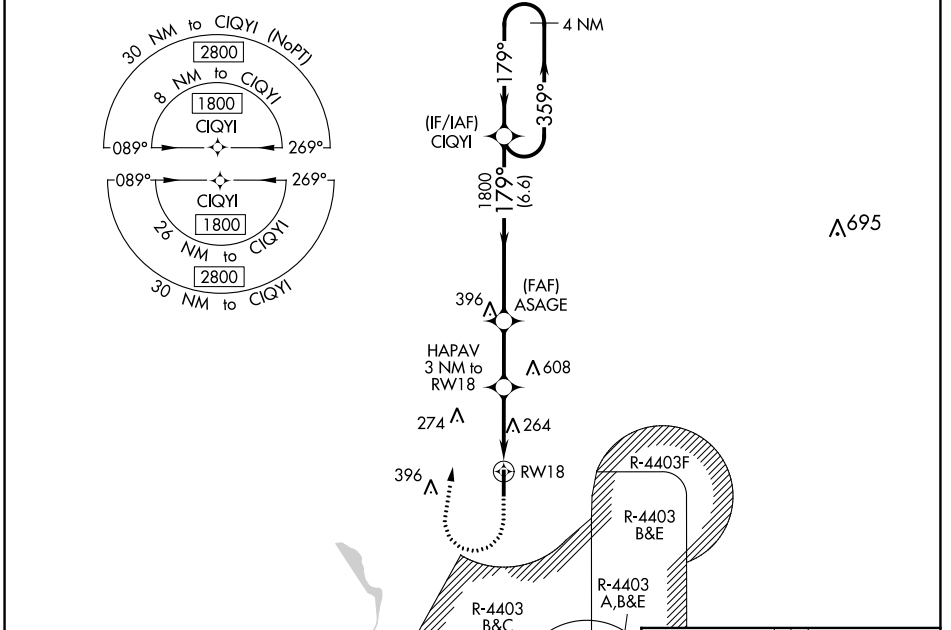
# RNAV (GPS) Z RWY 18

PICAYUNE MUNI (MJD)

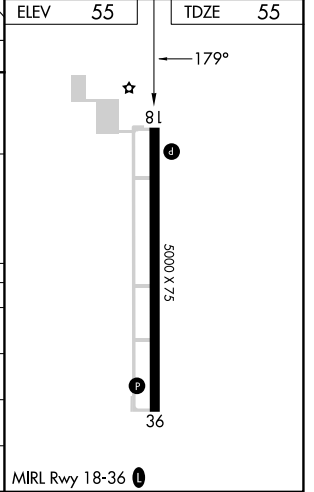
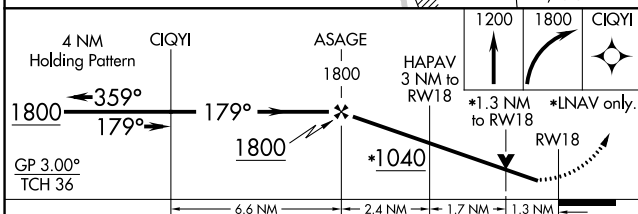
**⚠** For uncompensated Baro-VNAV systems, LNAV/VNAV NA below -15°C (5°F) or above 54°C (130°F). Baro-VNAV and VDP NA when using Stennis Inlt altimeter setting. DME/DME RNP-0.3 NA. Helicopter visibility reduction below 3/4 SM NA. Procedure NA when R-4403 B, C, or E is active. When local altimeter setting not received, used Stennis Inlt altimeter setting; increase LPV DA to 377 and visibility all Cats 1/8 mile; increase LNAV/VNAV DA to 621 and visibility all Cats 1/8 mile; increase all MDA 40 feet and Circling Cat C visibility 1/4 mile.

**MISSED APPROACH:** Climb to 1200, then climbing right turn to 1800 direct CIQYI and hold.

AWOS-3PT <b>119.075</b>	GULFPORT APP CON* <b>124.6 354.1</b>	UNICOM <b>122.8 (CTAF) 0</b>
----------------------------	---	---------------------------------



ELEV	55	TDZE	55
------	----	------	----



CATEGORY	A	B	C	D
LPV DA	343-1		288 (300-1)	
LNAV/VNAV DA	587-1 7/8		532 (600-1 7/8)	
LNAV MDA	520-1	465 (500-1)	520-1 3/8	465 (500-1 3/8)
<b>C</b> CIRCLING	520-1 465 (500-1)	580-1 525 (600-1)	700-1 3/4 645 (700-1 3/4)	960-3 905 (1000-3)

MIRL Rwy 18-36 **0**

SC-4, 18 MAY 2023 to 15 JUN 2023

SC-4, 18 MAY 2023 to 15 JUN 2023