

APP CRS	Rwy Idg	3400
319°	TDZE	1226
	Apt Elev	1228

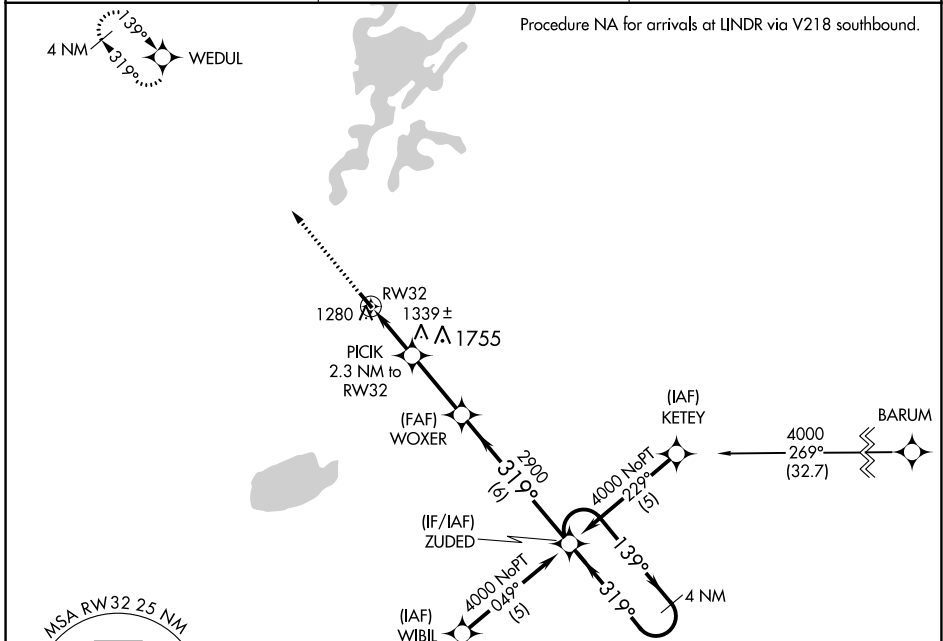
RNAV (GPS) RWY 32

ISEDOR IVERSON (H.Z.X)

▼ DME/DME RNP-0.3 NA.
When local altimeter setting not received, use Aitkin altimeter setting and increase all MDAs 40 feet.
VDP NA when using Aitkin altimeter setting.

MISSED APPROACH: Climb to 4000 direct WEDUL and hold.

AWOS-3 119.575	MINNEAPOLIS CENTER 127.9 281.45	CTAF 122.9 0
--------------------------	---	------------------------



NC-1, 08 AUG 2024 to 05 SEP 2024

NC-1, 08 AUG 2024 to 05 SEP 2024

4000	WEDUL	VGSI and descent angles not coincident (VGSI Angle 3.00/TCH 19).		4 NM Holding Pattern
		PICIK 2.3 NM to RW32	WOXER	ZUDED
		1.1 NM to RW32	3.04° TCH 40	319°
		2000	2900	4000
		1.1 1.3 NM	2.8 NM	6 NM
CATEGORY	A	B	C	D
LNVA MDA	1600-1	374 (400-1)	NA	NA
CIRCLING	1660-1 432 (500-1)	1700-1 472 (500-1)	NA	NA

