

APP CRS <b>126°</b>	Rwy Idg TDZE Apt Elev	<b>N/A</b> <b>N/A</b> <b>5945</b>
------------------------	-----------------------------	---

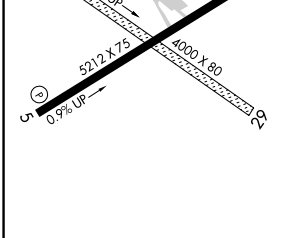
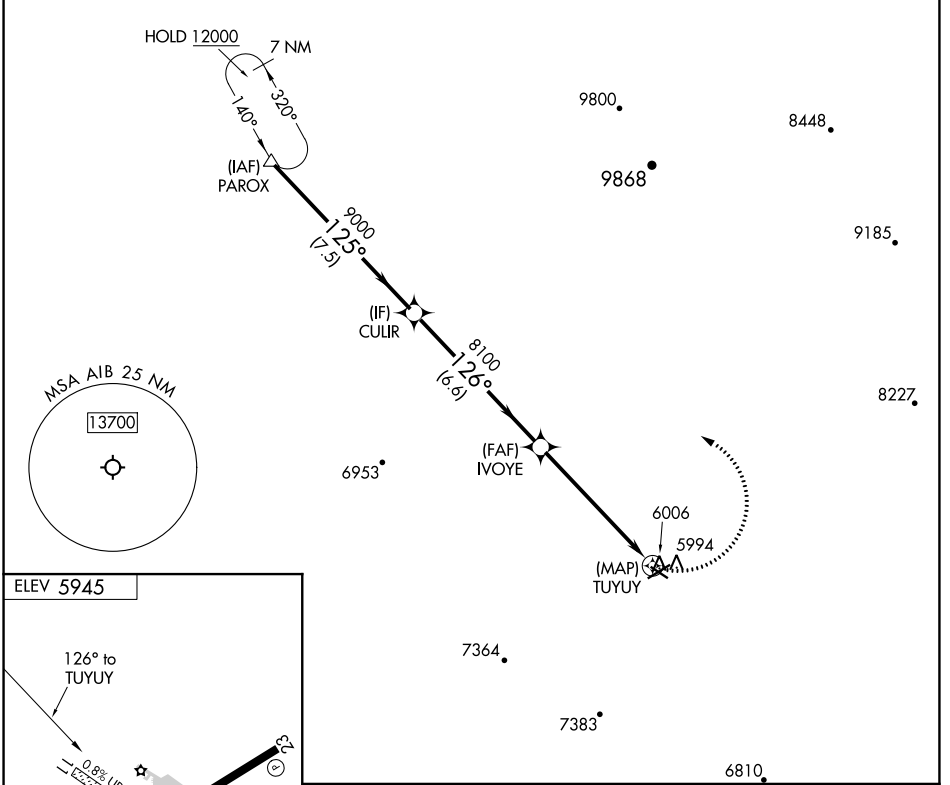
# RNAV (GPS)-A

HOPKINS FLD (AIB)

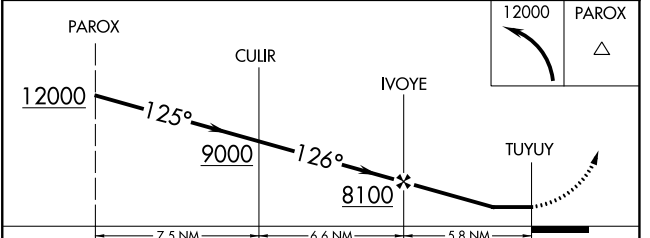
RNP APCH-GPS.	MISSED APPROACH: Climbing left turn to 12000 direct PAROX and hold, continue climb-in-hold to 12000.
<p><b>▽</b> Circling NA to Rwys 11 and 29. Circling Rwy 23 NA at night.</p> <p><b>⚠</b> When local altimeter setting not received, procedure NA.</p>	

AWOS-3 <b>132.525</b>	DENVER CENTER <b>127.1</b>	UNICOM <b>122.8 (CTAF)</b>
--------------------------	-------------------------------	-------------------------------

All arrivals on V244 descend to 12000 in PAROX holding pattern before departing PAROX.  
NoPT for arrival at PAROX on V391 southbound.



MIRL Rwy 5-23  
REIL Rws 5 and 23



CATEGORY	A	B	C	D
<b>☑</b> CIRCLING	6320-1 375 (400-1)	6400-1 455 (500-1)	6800-2½ 855 (900-2½)	NA

SW-1, 03 OCT 2024 to 31 OCT 2024

SW-1, 03 OCT 2024 to 31 OCT 2024