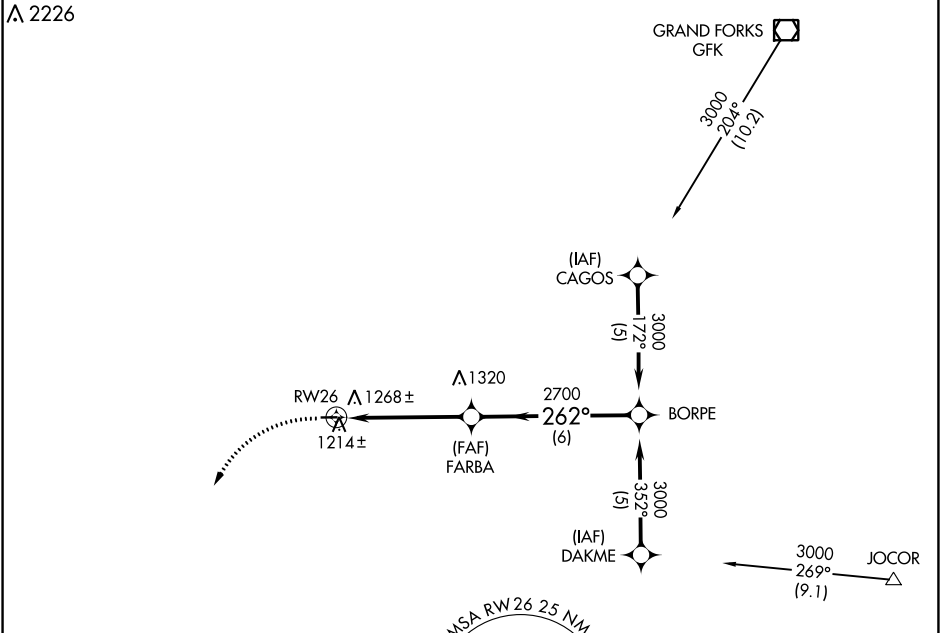


| | | |
|-------------|----------|-------------|
| APP CRS | Rwy Idg | 3160 |
| 262° | TDZE | 1117 |
| | Apt Elev | 1117 |

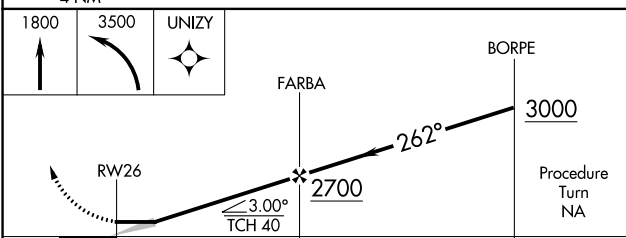
RNAV (GPS) RWY 26

NORTHWOOD MUNI/VINCE FLD (4V4)

| | |
|---|--|
| RNP APCH - GPS. | MISSED APPROACH: Climb to 1800 then climbing left turn to 3500 direct UNIZY WP and hold. |
| Use Grand Forks Intl altimeter setting. NA | |
| GRAND FORKS APP CON★ 118.1 318.1 | UNICOM 122.8 (CTAF) 0 |



| | |
|-----------|-----------|
| ELEV 1117 | TDZE 1117 |
|-----------|-----------|



| | |
|-----------------------|-----------------------|
| 1800 3500 UNIZY | |
| CATEGORY | A B C D |
| LNVA MDA | 1660-1 543 (600-1) NA |
| CIRCLING | 1720-1 603 (700-1) NA |

MIRL Rwy 8-26 0

NC-1, 31 OCT 2024 to 28 NOV 2024

NC-1, 31 OCT 2024 to 28 NOV 2024