

WAAS CH 57947 W02A	APP CRS 021°	Rwy Idg 4000 TDZE 74 Apt Elev 75
--	------------------------	---

RNAV (GPS) RWY 2

HOLY CROSS (HCA) (PAHC)

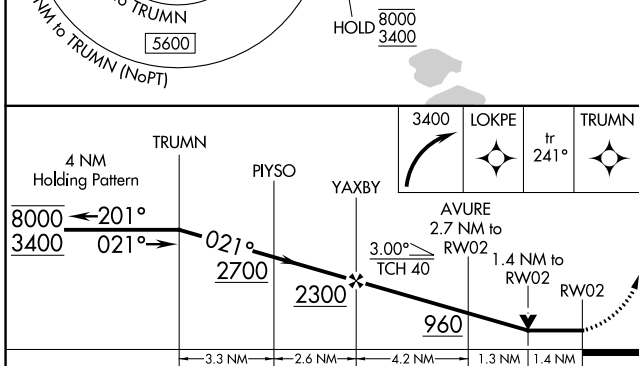
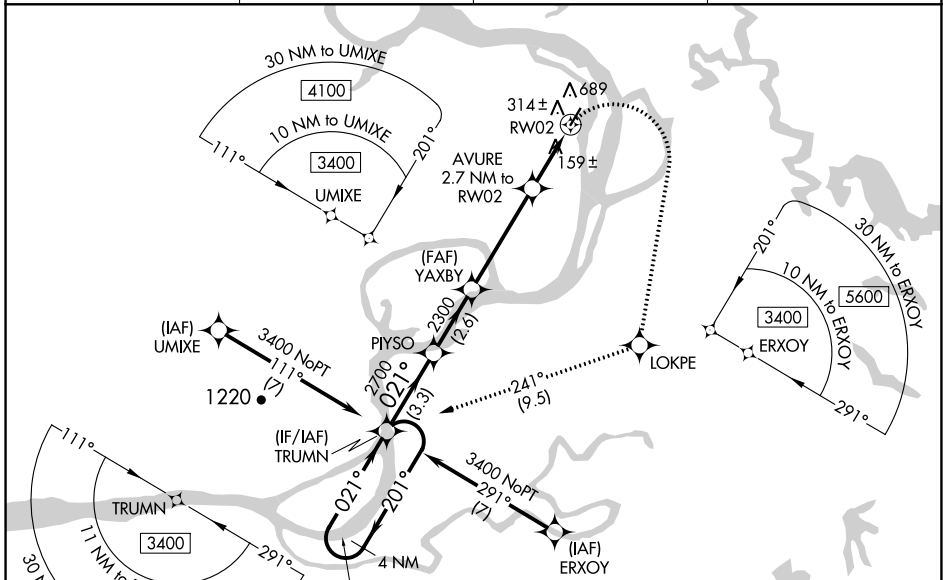
RNP APCH - GPS.

⚠ Circling Rwy 20 NA at night. Circling NA west of Rwy 2-20. Rwy 2 helicopter visibility reduction below $\frac{3}{4}$ SM NA. VDP NA when using Anvik altimeter setting. When local altimeter setting not received, use Anvik altimeter setting and increase all MDAs 120 feet and LNAV visibility Cat B, C and D $\frac{1}{2}$ SM, and LP visibility Cat C and D $\frac{3}{8}$ SM, and Circling all visibilities $\frac{1}{2}$ SM.

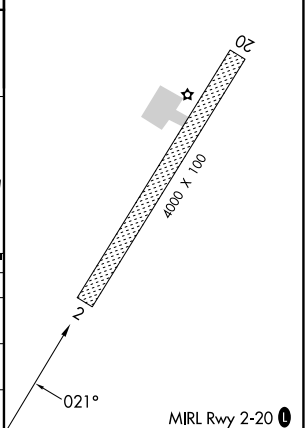
⚠ -28°C

MISSED APPROACH: Climbing right turn to 3400 direct LOKPE and on track 241° to TRUMN and hold, continue climb-in-hold to 3400.

AWOS-3P 118.325	ANCHORAGE CENTER 118.15 251.05	KENAI RADIO 122.45	CTAF 122.8
---------------------------	--	------------------------------	----------------------



ELEV 75	TDZE 74
---------	---------



CATEGORY	A	B	C	D
LP MDA	560-1	486 (500-1)	560-1 $\frac{3}{8}$	486 (500-1 $\frac{3}{8}$)
LNAV MDA	800-1	726 (800-1)	800-2	726 (800-2)
CIRCLING	800-1	725 (800-1)	800-2 725 (800-2)	800-2 $\frac{1}{4}$ 725 (800-2 $\frac{1}{4}$)

AK, 31 OCT 2024 to 26 DEC 2024

AK, 31 OCT 2024 to 26 DEC 2024