

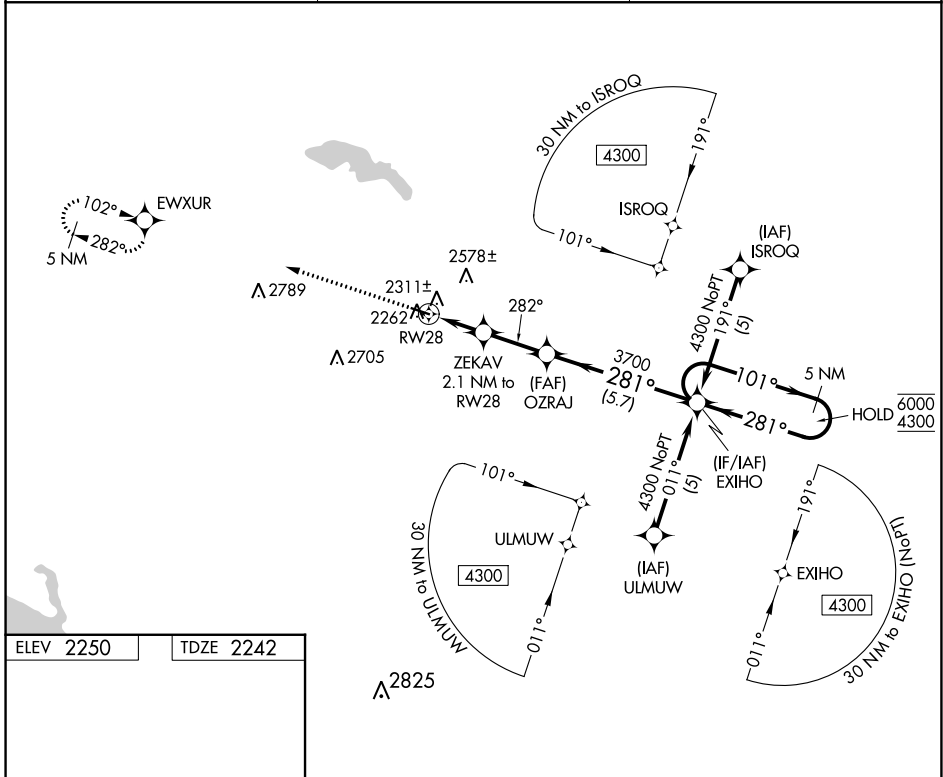
APP CRS	Rwy Idg	3900
282°	TDZE	2242
	Apt Elev	2250

RNAV (GPS) RWY 28

STANLEY MUNI (Ø8D)

RNP APCH - GPS.	MISSED APPROACH: Climb to 5000 direct EWXUR and hold, continue climb-in-hold to 5000.
Rwy 28 helicopter visibility reduction below ¼ SM NA.	

AWOS-3 121.1	MINNEAPOLIS CENTER 127.6 279.6	CTAF 122.9
------------------------	--	----------------------



ELEV 2250	TDZE 2242
MIRL Rwy 10-28	

5000	EWXUR	EXIHO	5 NM Holding Pattern
		6000	4300
0.9 NM to RWY 28		2.4 NM	5.7 NM
CATEGORY	A	B	C
LNAV MDA	2580-1	338 (400-1)	NA
CIRCLING	2720-1	2940-1	NA
	470 (500-1)	690 (700-1)	

NC-1, 03 OCT 2024 to 31 OCT 2024

NC-1, 03 OCT 2024 to 31 OCT 2024