

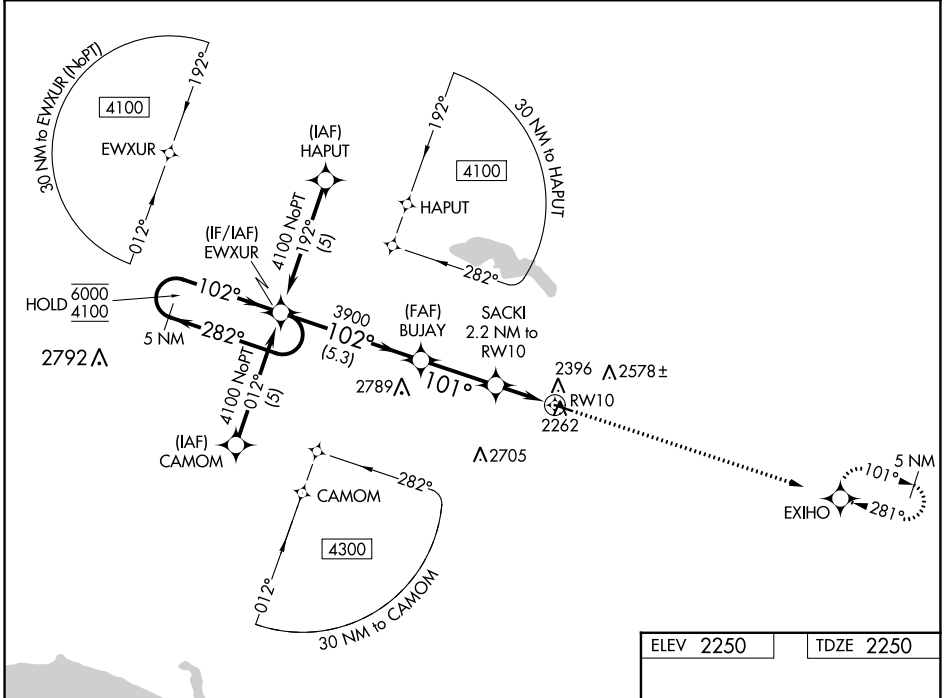
WAAS CH <b>87146</b> <b>W10A</b>	APP CRS <b>101°</b>	Rwy Idg <b>3900</b> TDZE <b>2250</b> Apt Elev <b>2250</b>
--	------------------------	---

# RNAV (GPS) RWY 10

STANLEY MUNI (Ø8D)

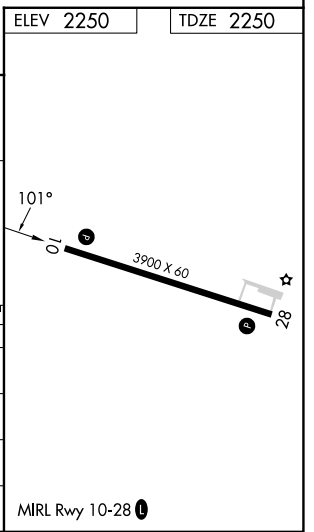
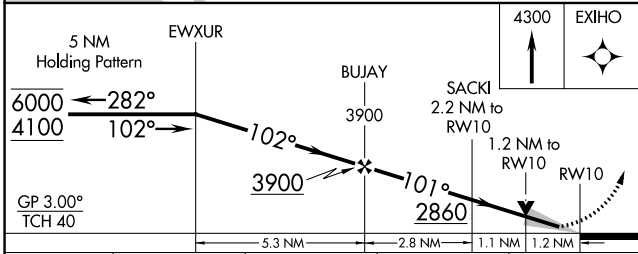
RNP APCH - GPS.	MISSED APPROACH: Climb to 4300 direct EXIHO and hold.
<p>▼ For uncompensated Baro-VNAV systems, LNAV/VNAV NA below -19°C or above 54°C.</p> <p>▲</p>	

AWOS-3 <b>121.1</b>	MINNEAPOLIS CENTER <b>127.6 279.6</b>	CTAF <b>122.9</b>
------------------------	--	----------------------



NC-1, 28 NOV 2024 to 26 DEC 2024

NC-1, 28 NOV 2024 to 26 DEC 2024



CATEGORY	A	B	C	D
LPV DA	2450-1	200 (200-1)		NA
LNAV/VNAV DA	2538-1	288 (300-1)		NA
LNAV MDA	2660-1	410 (500-1)		NA
CIRCLING	2720-1 470 (500-1)	2940-1 690 (700-1)		NA