

WAAS CH <b>61240</b> <b>W09A</b>	APP CRS <b>094°</b>	Rwy Idg TDZE Apt Elev	<b>4650</b> <b>1459</b> <b>1470</b>
--	------------------------	-----------------------------	---

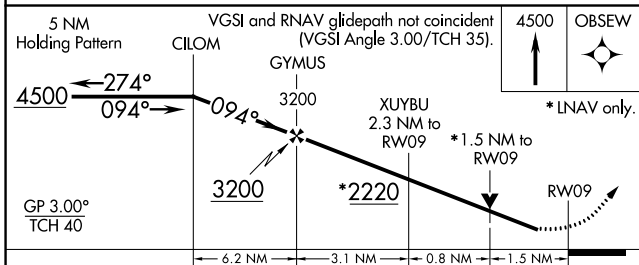
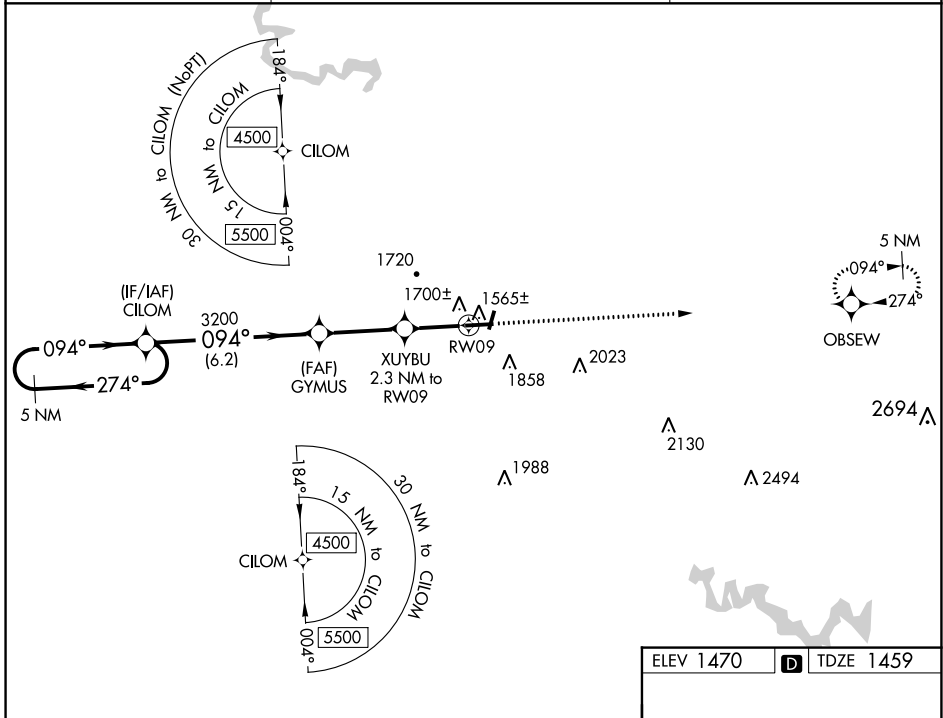
# RNAV (GPS) RWY 9

PIKE COUNTY/HATCHER FLD (P.B.X)

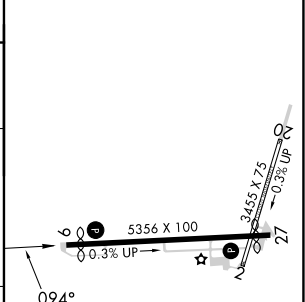
**⚠** For uncompensated Baro-VNAV systems, LNAV/VNAV NA below -17°C (0°F) or above 54°C (130°F). DME/DME RNP-0.3 NA. Rwy 9 helicopter visibility reduction below ¾ SM NA. Circling NA to Rws 2 and 20.

MISSED APPROACH: Climb to 4500 direct OBSEW and hold.

AWOS-3PT <b>121.225</b>	INDIANAPOLIS CENTER <b>126.575 257.85</b>	UNICOM <b>122.8 (CTAF)</b> <b>📶</b>
----------------------------	--	--



ELEV 1470	<b>D</b> TDZE 1459
-----------	--------------------



CATEGORY	A	B	C	D
LPV DA		1709-1	250 (300-1)	
LNAV/VNAV DA		1891-1½	432 (500-1½)	
LNAV MDA	1960-1	501 (500-1)	1960-1⅓	501 (500-1⅓)
<b>C</b> CIRCLING	2120-1 650 (700-1)	2160-1 690 (700-1)	2160-2 690 (700-2)	2460-3 990 (1000-3)

HIRL Rwy 9-27 **📶**  
REIL Rws 9 and 27 **📶**

SE-1, 03 OCT 2024 to 31 OCT 2024

SE-1, 03 OCT 2024 to 31 OCT 2024