

APP CRS	Rwy Idg	N/A
067°	TDZE	N/A
	Apt Elev	5863

RNAV (GPS)-A

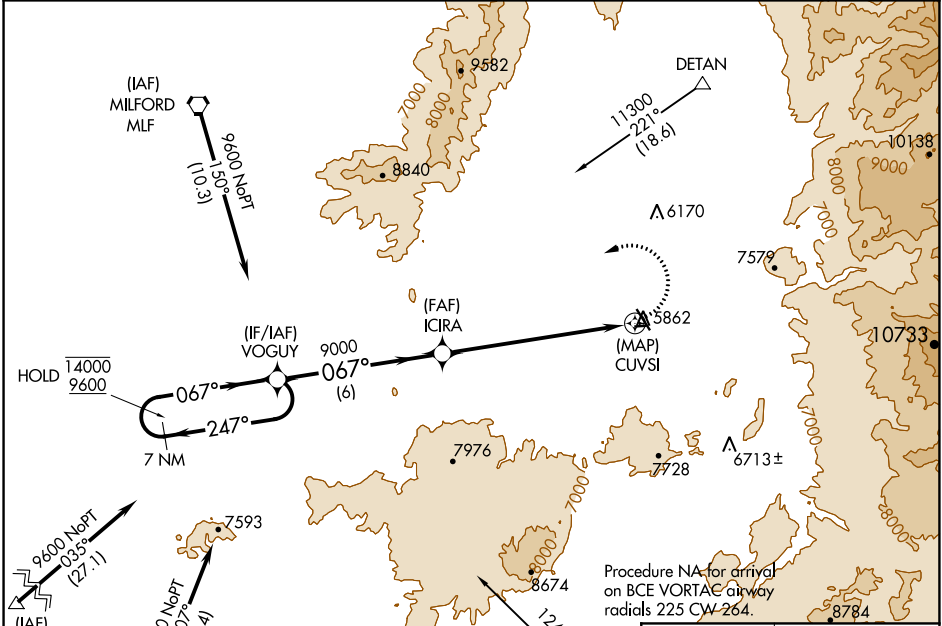
BEAVER MUNI (U52)

RNP APCH.

▼ Circling Rwy 7, 25, 31 NA at night. Circling NA for Cat C southwest of Rwy 13-31.

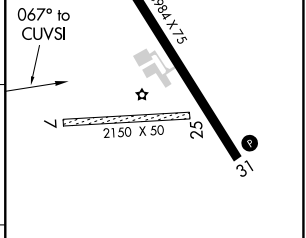
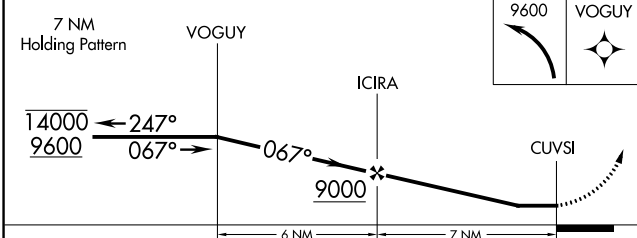
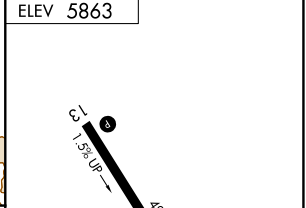
▲ MISSED APPROACH: Climbing left turn to 9600 direct VOGUY and hold.

AWOS-3PT 119.925	SALT LAKE CITY CENTER 125.575 379.275	CTAF 122.9
----------------------------	---	----------------------



Procedure NA for arrivals on BCE VORTAC airway radials 225 CW-264.

Procedure NA for arrivals at BERYL on V293 westbound.



CATEGORY	A	B	C	D
CIRCLING	7080-1¼ 1217 (1300-1¼)	7080-1½ 1217 (1300-1½)	7580-3 1717 (1800-3)	NA

MIRL Rwy 13-31 **▲**
REIL Rwy 13 and 31 **▲**

SW-4, 03 OCT 2024 to 31 OCT 2024

SW-4, 03 OCT 2024 to 31 OCT 2024