

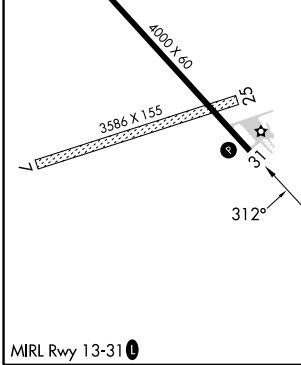
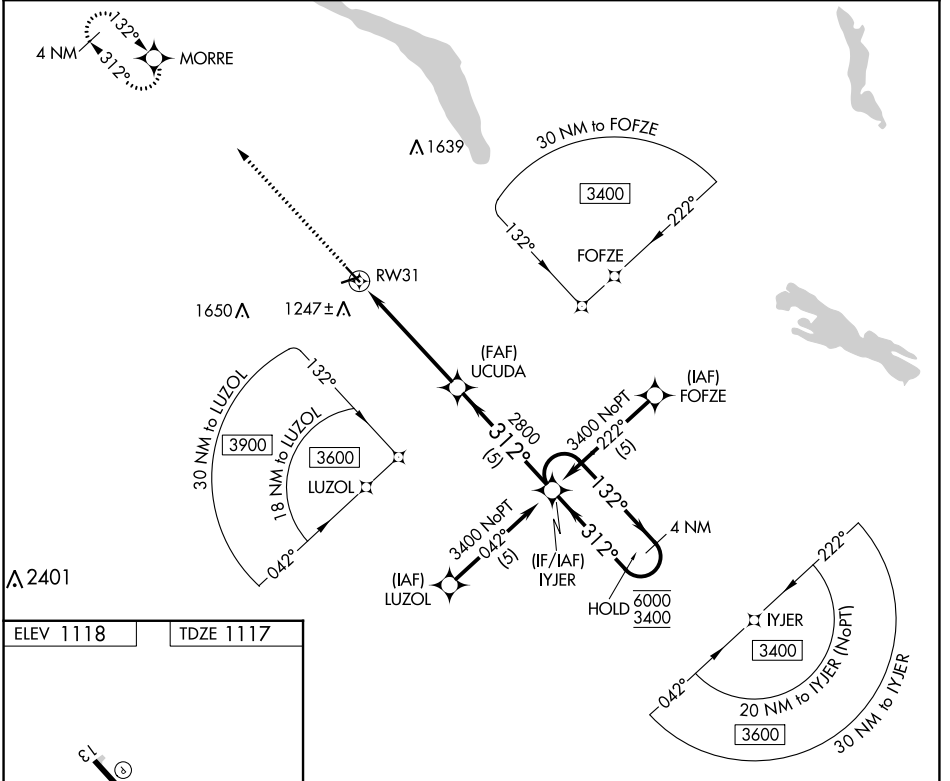
APP CRS	Rwy Idg	4000
312°	TDZE	1117
	Apt Elev	1118

RNAV (GPS) RWY 31

MILBANK MUNI (1D1)

RNP APCH - GPS.	MISSED APPROACH: Climb to 3400 direct MORRE and hold.
▽ Rwy 31 helicopter visibility reduction below 3/4 SM NA. Circling Rwy 7, 25 NA. When local altimeter setting not received, use Ortonville altimeter setting and increase all MDAs 20 feet. VDP NA when using Ortonville Muni/Martinson Fld altimeter setting.	

AWOS-3P 118.9	MINNEAPOLIS CENTER 128.5 306.2	AUNICOM 122.8 (CTAF) 0
-------------------------	--	----------------------------------



ELEV 1118	TDZE 1117
Visual Segment - Obstacles.	
3400 MORRE	IYJER 4 NM Holding Pattern
UCUDA	6000 / 3400
1.8 NM to RW31	132° / 312°
1.8 NM	3.4 NM
5 NM	
CATEGORY	A B C D
LNAV MDA	1720-1 603 (700-1) NA NA
CIRCLING	1720-1 602 (700-1) NA

NC-1, 31 OCT 2024 to 28 NOV 2024

NC-1, 31 OCT 2024 to 28 NOV 2024