

APP CRS	Rwy Idg	<b>3600</b>
<b>133°</b>	TDZE	<b>1606</b>
	Apt Elev	<b>1608</b>

# RNAV (GPS) RWY 14

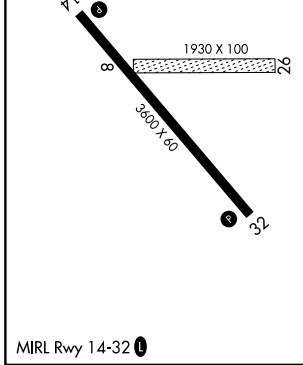
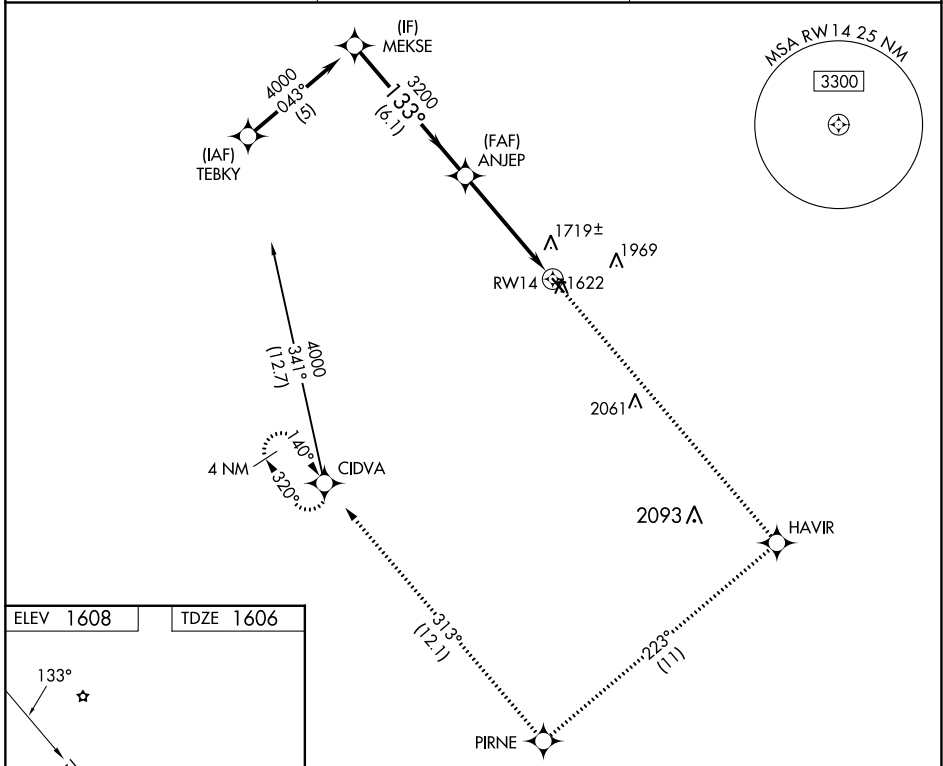
ROBERTSON FLD (D55)

RNP APCH - GPS.

Circling NA to Rwy 8 and 26. Rwy 14 helicopter visibility reduction below 3/4 SM NA. When local altimeter setting not received, use Devils Lake altimeter setting and increase all MDAs 140 feet and LNAV visibility Cat C 3/8 SM, and Circling visibility Cat C 1/2 SM.

MISSED APPROACH: Climb to 4000 direct HAVIR and on track 223° to PIRNE on track 313° to CIDVA and hold.

AWOS-3 <b>118.225</b>	MINNEAPOLIS CENTER <b>132.15 269.6</b>	UNICOM <b>122.8 (CTAF) 0</b>
--------------------------	---	---------------------------------



	4000	HAVIR	PIRNE	CIDVA
	↑	✧	tr 223°	tr 313°
	ANJEP	VGSI and descent angles not coincident (VGSI Angle 3.00/TCH 28).		
	4000	3200	3200	3200
		3.04° TCH 40	1 NM to RWY14	RWY14
	6.1 NM	3.8 NM	1 NM	
CATEGORY	A	B	C	D
LNAV MDA	2100-1	494 (500-1)	2100-1 3/8 494 (500-1 3/8)	NA
CIRCLING	2240-1	632 (700-1)	2320-2 712 (800-2)	NA

NC-1, 31 OCT 2024 to 28 NOV 2024

NC-1, 31 OCT 2024 to 28 NOV 2024