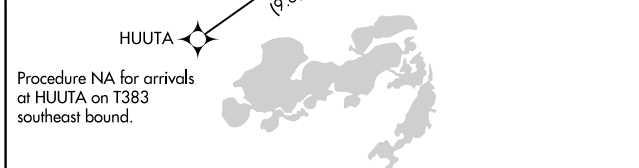
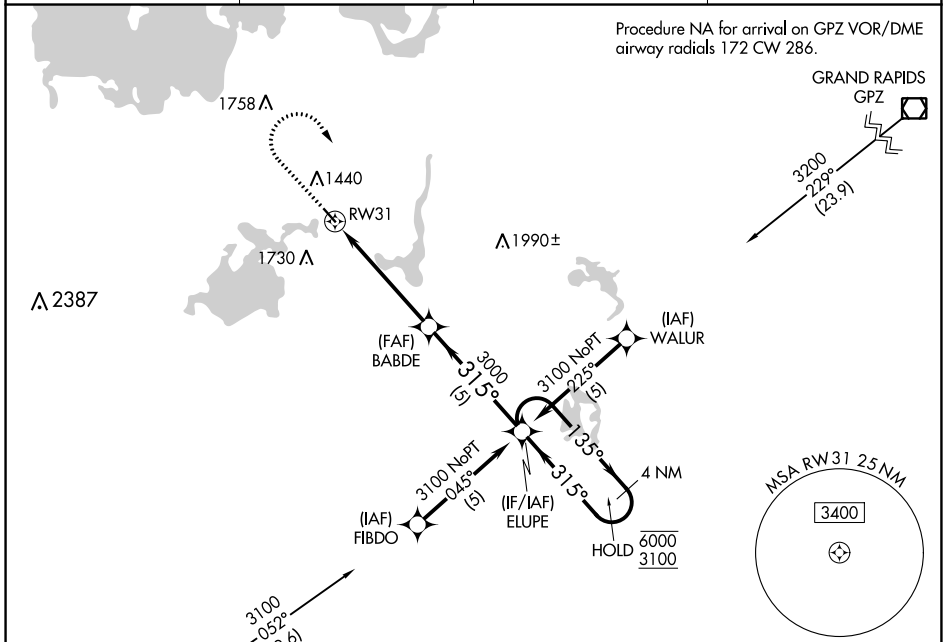


APP CRS <b>315°</b>	Rwy Idg TDZE Apt Elev	<b>3549</b> <b>1337</b> <b>1337</b>
------------------------	-----------------------------	---

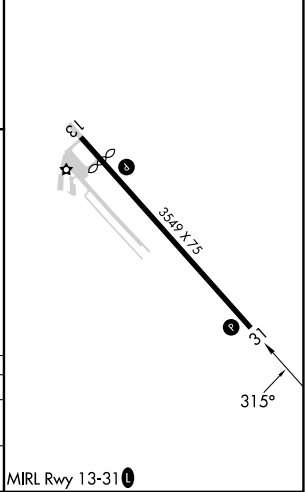
# RNAV (GPS) RWY 31

LONGVILLE MUNI (XVG)

RNP APCH - GPS.		MISSED APPROACH: Climb to 2000 then climbing right turn to 3100 direct ELUPE and hold.	
<p><b>▼</b> Circling Rwy 13 NA at night. <b>▲</b> Rwy 31 helicopter visibility reduction below 3/4 SM NA.</p>		AWOS-3 <b>118.275</b>	MINNEAPOLIS CENTER <b>118.05 239.0</b>
		GCO <b>121.725</b>	CTAF <b>122.9 0</b>



ELEV 1337	<b>D</b> TDZE 1337
-----------	--------------------



2000	3100	ELUPE	VGSi and descent angles not coincident (VGSi Angle 4.00/TCH 28)	
		BABDE	ELUPE	4 NM Holding Pattern
		3000	6000	3100
		315°	135°	315°
		1.1 NM to RWY 31	4 NM	5 NM
		≤ 3.05° TCH 40		

CATEGORY	A	B	C	D
RNAV MDA	1820-1	483 (500-1)	NA	
<b>C</b> CIRCLING	1860-1 523 (600-1)	2080-1 743 (800-1)	NA	

MIRL Rwy 13-31 **0**

NC-1, 31 OCT 2024 to 28 NOV 2024

NC-1, 31 OCT 2024 to 28 NOV 2024