

WAAS CH 78430 W07A	APP CRS 066°	Rwy Idg TDZE Apt Elev	5003 1393 1411
--	------------------------	-----------------------------	---

RNAV (GPS) RWY 7

LEE COUNTY (ØVG)

- V** DME/DME RNP-0.3 NA. Rwy 07 helicopter visibility reduction below ¾ SM NA.
- A** ** Missed approach requires minimum climb gradient of 240 feet per NM to 3400.

MISSED APPROACH: Climb to 5600 direct OKLUH and hold, continue climb-in-hold to 5600.

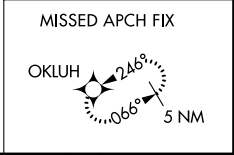
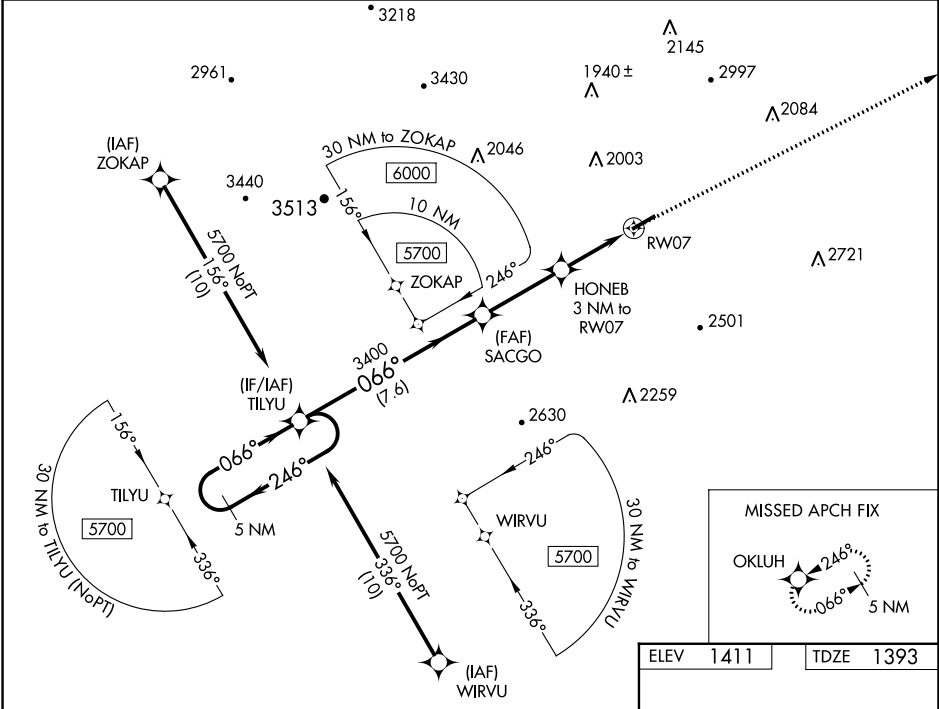
AWOS-3
120.125

ATLANTA CENTER
127.55 269.50

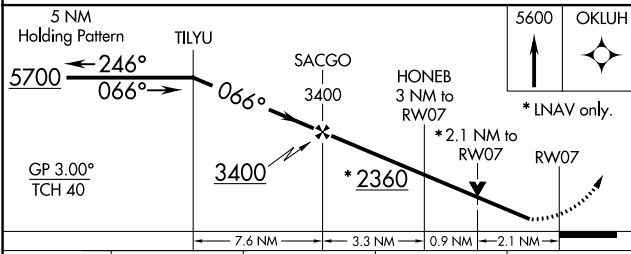
CTAF
122.9

NE-3, 03 OCT 2024 to 31 OCT 2024

NE-3, 03 OCT 2024 to 31 OCT 2024



ELEV	1411	TDZE	1393
------	------	------	------



CATEGORY	A	B	C	D
LPV DA	** 1643-1	250 (300-1)		NA
LPV DA	1881-1¾	488 (500-1¾)		NA
LNAV/VNAV DA	2024-2½	631 (700-2½)		NA
LNAV MDA	2080-1	687 (700-1)	2080-1¾ 687 (700-1¾)	NA
C CIRCLING	2140-1 729 (800-1)	2180-1 769 (800-1)	2600-3 1189 (1200-3)	NA

