

APP CRS **125°**
 Rwy ldg **4196**
 TDZE **1746**
 Apt Elev **1747**

RNAV (GPS) RWY 14

LAKE PLACID (LKP)

RNP APCH - GPS.

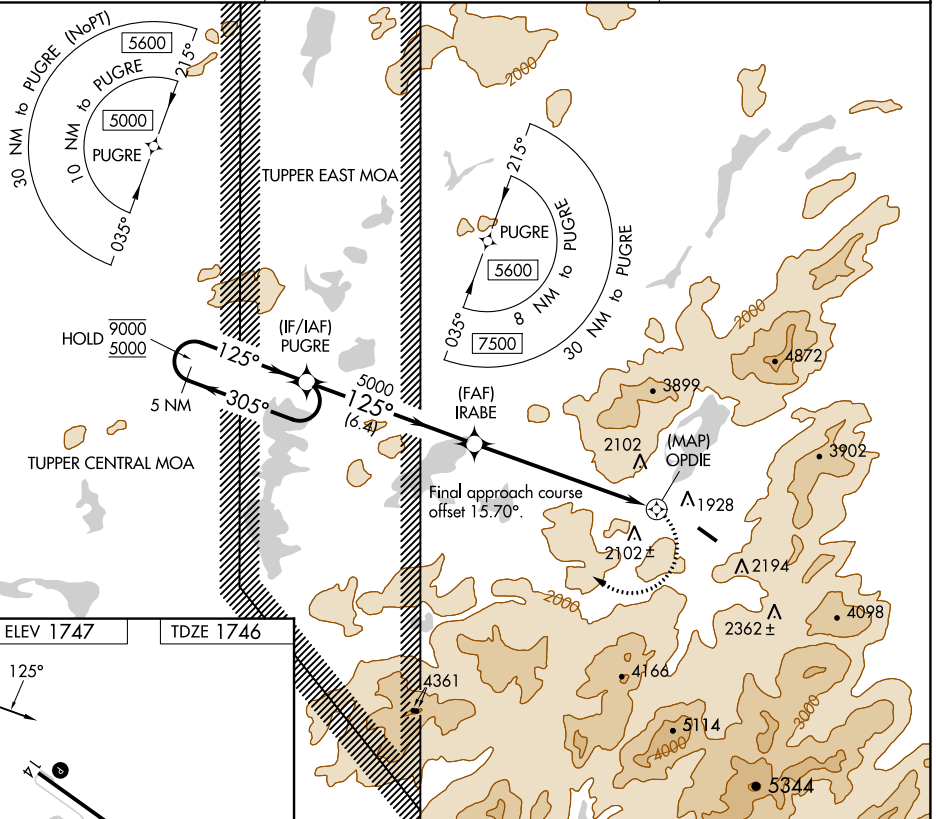
- Rwy 14 helicopter visibility reduction below 1 SM NA.
- NA Use Saranac Lake altimeter setting.
- 32°C Procedure NA at night.

MISSED APPROACH: Climbing right turn to 5000 direct PUGRE and hold.

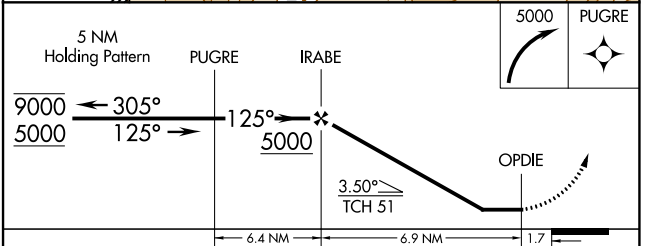
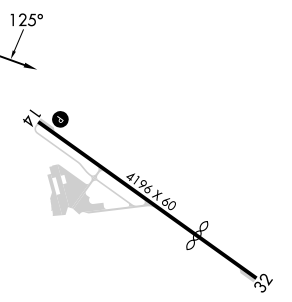
SLK ASOS
124.175

BOSTON CENTER
120.35 342.25

UNICOM
122.8 (CTAF) 0



ELEV 1747 TDZE 1746



CATEGORY	A	B	C	D
LNNAV MDA	3080-2	1334 (1400-2)		NA
CIRCLING	3080-2	1333 (1400-2)		NA

MIRL Rwy 14-32 0

NE-2, 31 OCT 2024 to 28 NOV 2024

NE-2, 31 OCT 2024 to 28 NOV 2024