

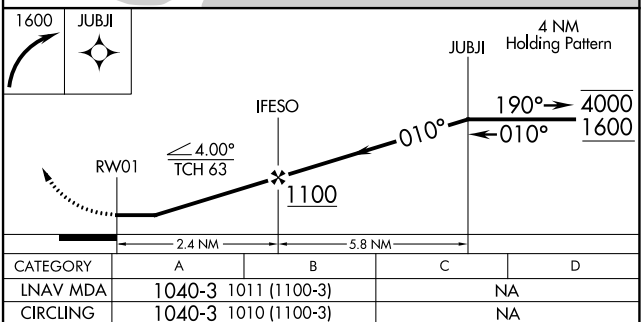
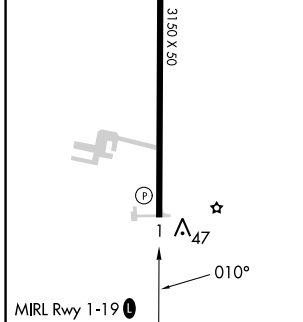
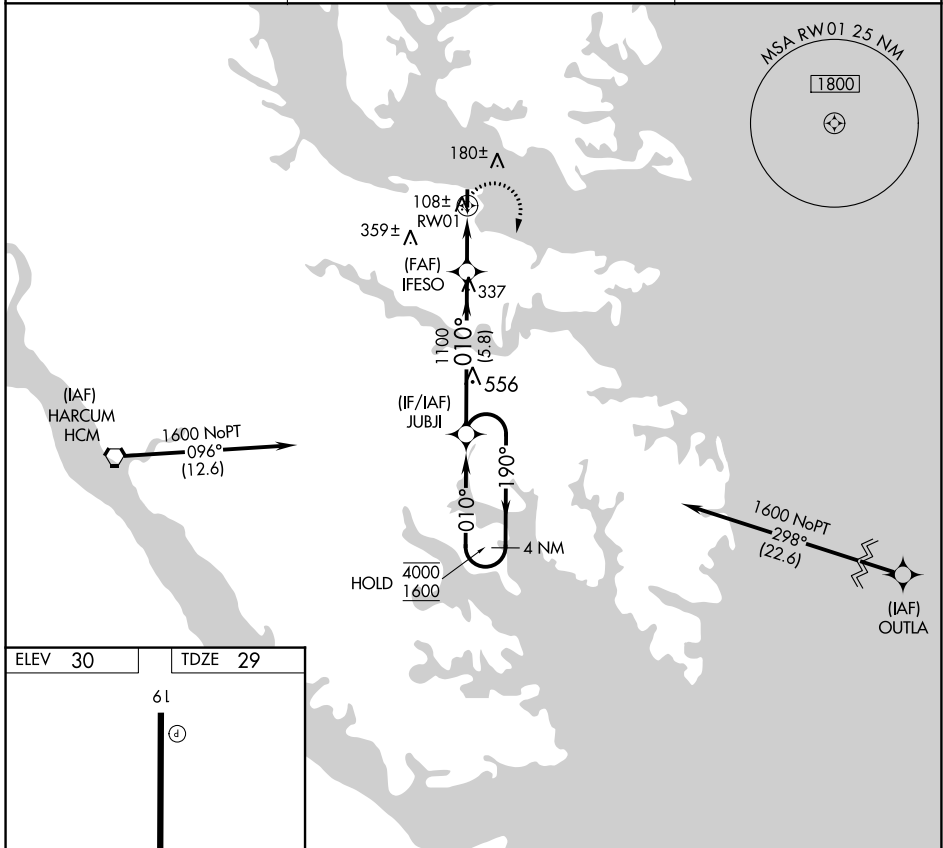
APP CRS	Rwy Idg	3150
010°	TDZE	29
	Apt Elev	30

RNAV (GPS) RWY 1

HUMMEL FLD (W75)

RNP APCH - GPS.	MISSED APPROACH: Climbing right turn to 1600 direct JUBJI and hold.
<p>Procedure NA at night.</p> <p>Rwy 1 helicopter visibility reduction below 1 SM NA.</p>	

AWOS-3 118.45	NORFOLK APP CON 126.05 370.925	UNICOM 123.0 (CTAF)
-------------------------	--	-------------------------------



NE-3, 26 DEC 2024 to 23 JAN 2025

NE-3, 26 DEC 2024 to 23 JAN 2025