

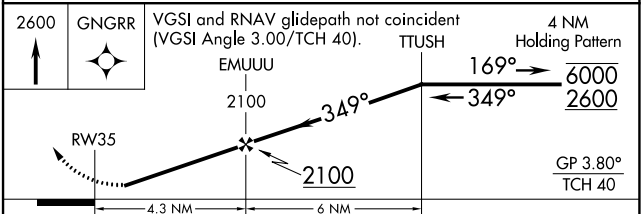
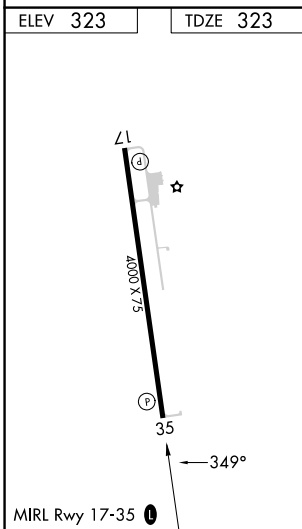
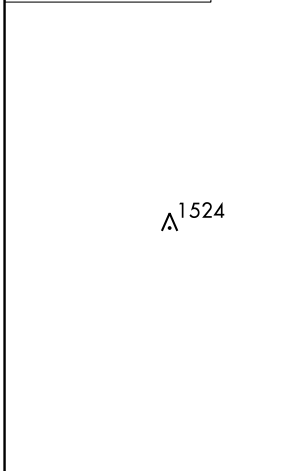
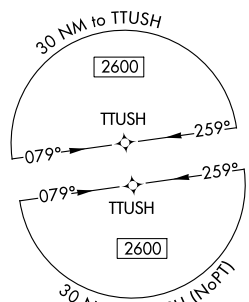
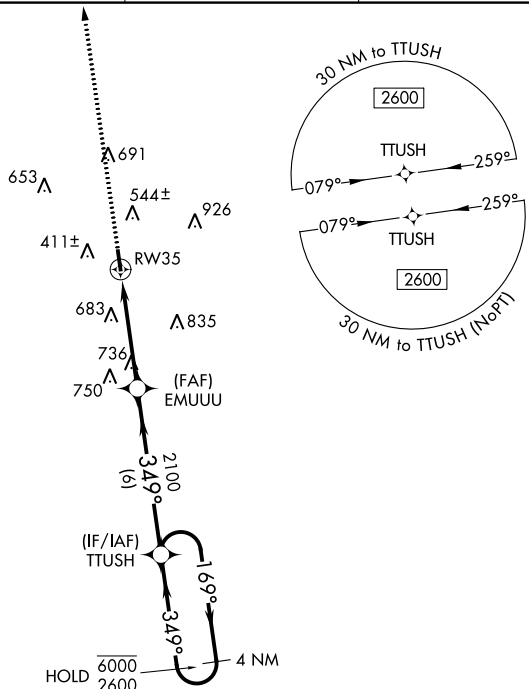
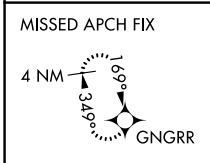
WAAS CH <b>99744</b> <b>W35A</b>	APP CRS <b>349°</b>	Rwy Idg <b>4000</b> TDZE <b>323</b> Apt Elev <b>323</b>
--	------------------------	---

# RNAV (GPS) RWY 35

SMITHVILLE CRAWFORD MUNI (84R)

RNP APCH - GPS.	MISSED APPROACH: Climb to 2600 direct GNGRR and hold.
<p>▼ Circling Rwy 17 NA at night. Rwy 35 helicopter visibility reduction below 1 SM NA. Baro-VNAV NA.</p> <p>▲ NA</p>	

GYB AWOS-3 <b>119.225</b>	AUSTIN APP CON <b>120.875 270.25</b>	CTAF <b>122.9</b>	<b>123.30</b>
------------------------------	---	----------------------	---------------



CATEGORY	A	B	C	D
LPV DA	648-1	325 (400-1)		NA
LNAV/VNAV DA	827-1 $\frac{3}{8}$	504 (600-1 $\frac{3}{8}$ )		NA
LNAV MDA	1040-1	717 (800-1)		NA
CIRCLING	1040-1	717 (800-1)		NA