

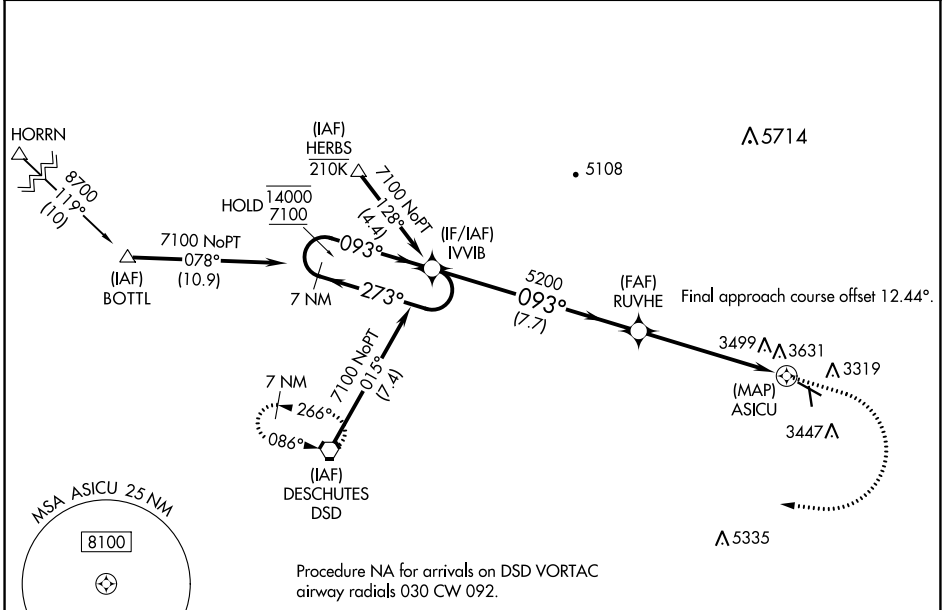
WAAS CH <b>60936</b> <b>W11A</b>	APP CRS <b>093°</b>	Rwy Idg TDZE Apt Elev	<b>5405</b> <b>3246</b> <b>3251</b>
--	------------------------	-----------------------------	---

# RNAV (GPS) RWY 11

PRINEVILLE (S39)

RNP APCH-GPS.	MISSED APPROACH: Climb to 5100 then climbing right turn to 7100 direct DSD VORTAC and hold.
<p>⚠ Circling NA for Cat D south of Rwy 11-29.</p> <p>⚠ Rwy 11 helicopter visibility reduction below 3/4 SM NA.</p> <p>⚠ Circling Rwy 15 NA at night.</p>	*Misted approach requires minimum climb of 215 feet per NM to 5400.

AWOS-3PT <b>118.325</b>	SEATTLE CENTER <b>126.15 269.475</b>	UNICOM <b>122.7 (CTAF) 0</b>
----------------------------	---	---------------------------------



NW-1, 08 AUG 2024 to 05 SEP 2024

NW-1, 08 AUG 2024 to 05 SEP 2024

ELEV 3251		TDZE 3246		
<p>7 NM Holding Pattern</p> <p>IVVIB</p> <p>14000 ← 273°</p> <p>7100 → 093°</p>		<p>5100</p> <p>7100</p> <p>DSD</p>	<p>093°</p>	
<p>7.7 NM</p> <p>4.8 NM</p> <p>0.7</p> <p>0.5</p>		<p>0.7 NM to ASICU</p> <p>ASICU</p> <p>3.00°</p> <p>TCH 40</p>		
CATEGORY	A	B	C	D
LP MDA*	3660-1	414 (500-1)	3660-1 1/8	414 (500-1 1/8)
LP MDA	3760-1	514 (600-1)	3760-1 3/8	514 (600-1 3/8)
LNAV MDA	3900-1	654 (700-1)	3900-1 7/8	654 (700-1 7/8)
CIRCLING	3960-1 709 (800-1)	4040-1 789 (800-1)	4040-2 1/4 789 (800-2 1/4)	4040-2 1/2 789 (800-2 1/2)
PRINEVILLE, OREGON		PRINEVILLE (S39)		
Amdt 3 17JUN21		44°17'N-120°54'W		
		<b>RNAV (GPS) RWY 11</b>		

MIRL Rwy 11-29 0  
LIRL Rwy 15-33 0