

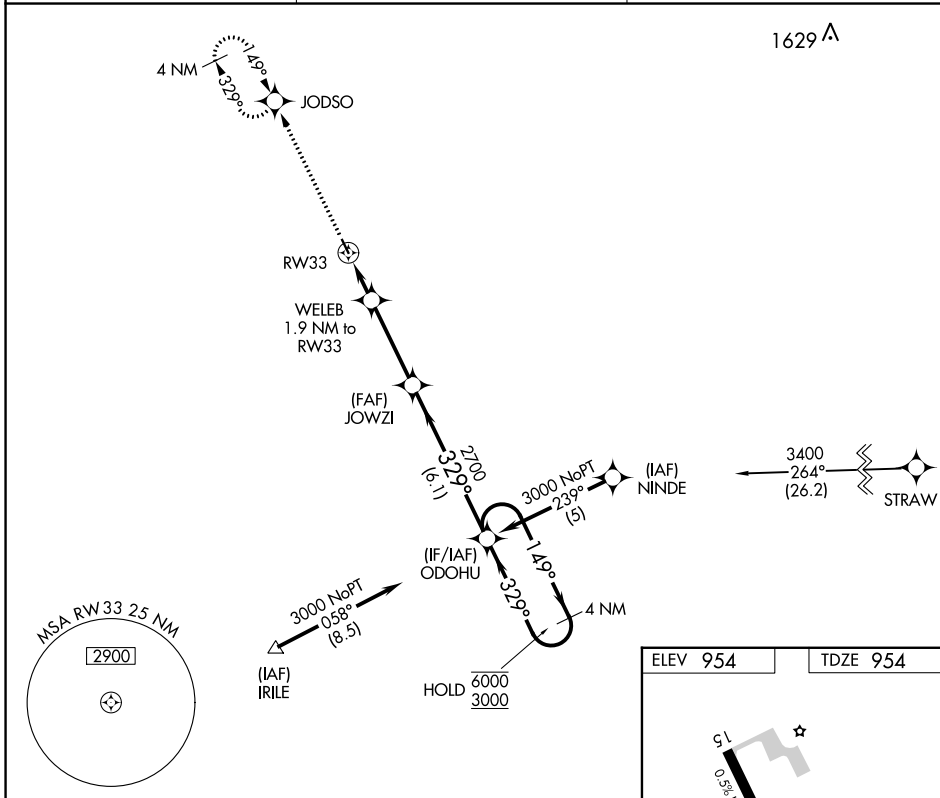
APP CRS	Rwy Idg	3103
329°	TDZE	954
	Apt Elev	954

RNAV (GPS) RWY 33

NORMAN COUNTY ADA/TWIN VALLEY (D00)

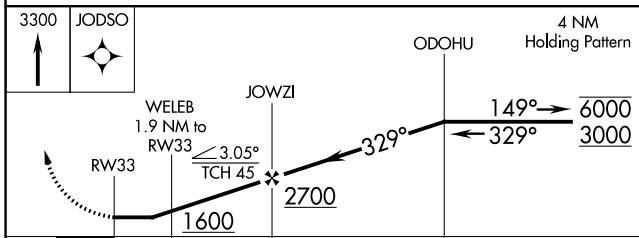
RNP APCH.	MISSED APPROACH: Climb to 3300 direct JODSO and hold, continue climb-in-hold to 3300.
<p>Procedure NA at night. Rwy 33 helicopter visibility reduction below 1 SM NA. Use Hector Intl altimeter setting.</p>	

FAR ASOS 124.5 379.2	FARGO APP CON 120.4 377.15	CTAF 122.9
--------------------------------	--------------------------------------	----------------------



NC-1, 31 OCT 2024 to 28 NOV 2024

NC-1, 31 OCT 2024 to 28 NOV 2024



CATEGORY	A	B	C	D
LNVA MDA	1540-1	586 (600-1)	1540-1 $\frac{3}{4}$ 586 (600-1 $\frac{3}{4}$)	NA
CIRCLING	1540-1 586 (600-1)	1580-1 626 (700-1)	1600-1 $\frac{3}{4}$ 646 (700-1 $\frac{3}{4}$)	NA