

WAAS CH 78217 W31A	APP CRS 307°	Rwy Idg TDZE Apt Elev	3700 1675 1680
--	------------------------	-----------------------------	---

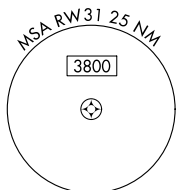
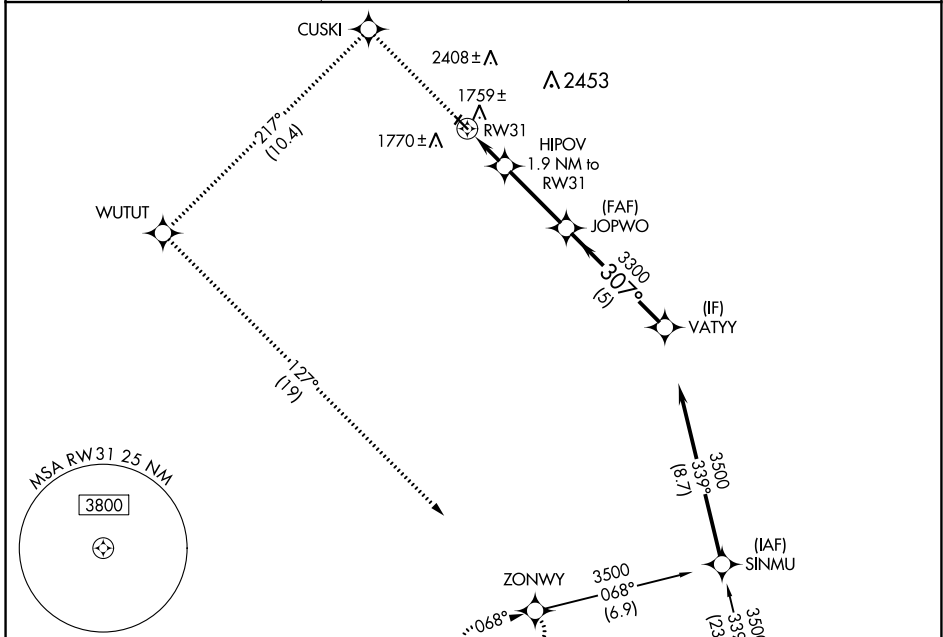
RNAV (GPS) RWY 31

BOTTINEAU MUNI (D09)

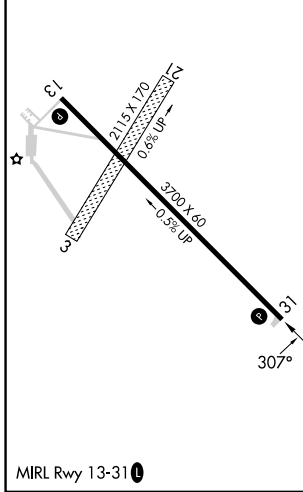
RNP APCH - GPS.
 ⚠ Circling NA to Rwys 3 and 21. For uncompensated Baro-VNAV systems, LNAV/VNAV NA below -18°C or above 54°C.

MISSED APPROACH: Climb to 3900 direct CUSKI and left turn on track 217° to WUTUT and left turn on track 127° to ZONWY and hold.

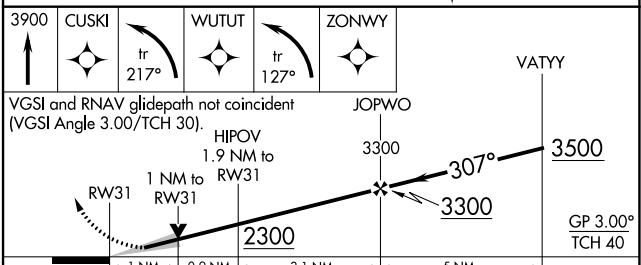
AWOS-3PT 118.25	MINOT APP CON* 119.6 363.8	UNICOM 122.8 (CTAF) 0
---------------------------	--------------------------------------	---------------------------------



ELEV 1680	TDZE 1675
-----------	-----------



Procedure NA for arrivals at BALTA on V430 eastbound.



CATEGORY	A	B	C	D
LPV DA	1875-1	200 (200-1)		NA
LNAV/VNAV DA	1925-1	250 (300-1)		NA
LNAV MDA	2020-1	345 (400-1)		NA
CIRCLING	2200-1	2380-1		NA
	520 (600-1)	700 (700-1)		

NC-1, 03 OCT 2024 to 31 OCT 2024

NC-1, 03 OCT 2024 to 31 OCT 2024