

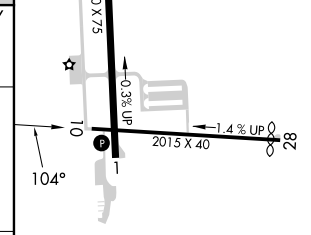
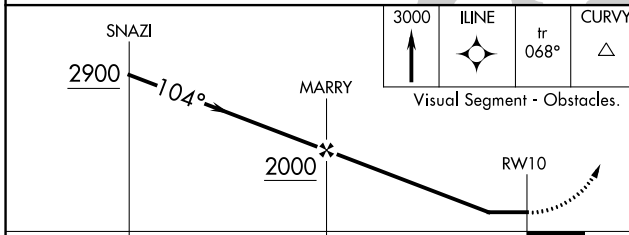
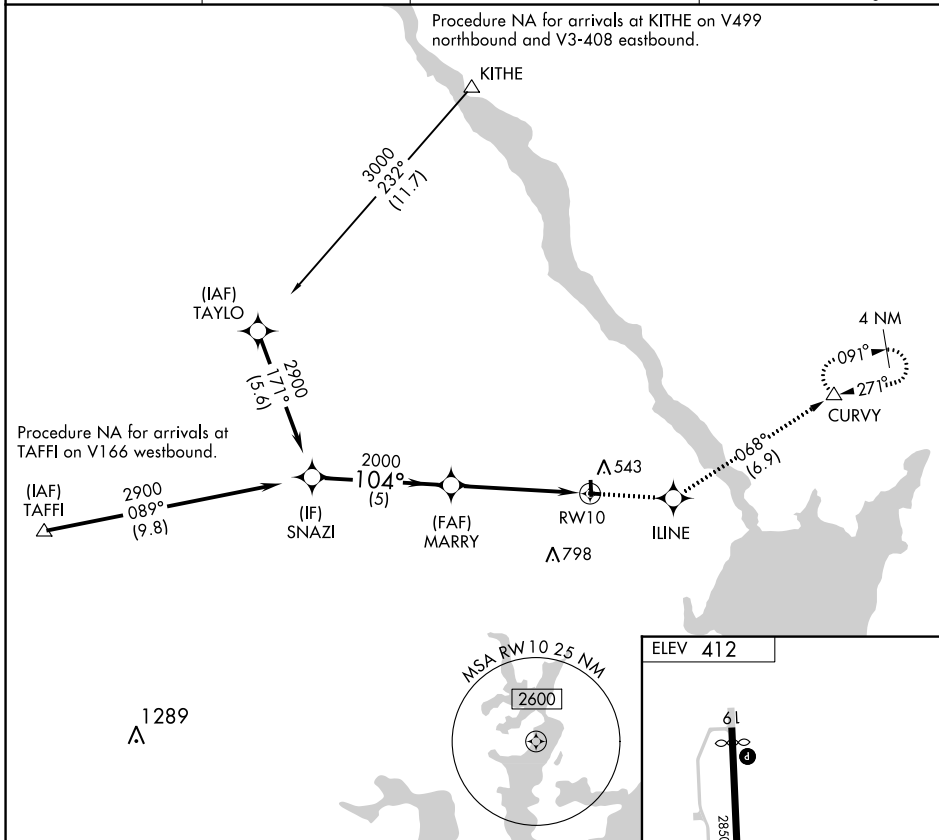
APP CRS	Rwy Idg	N/A
104°	TDZE	N/A
	Apt Elev	412

RNAV (GPS)-B

HARFORD COUNTY (ØW3)

RNP APCH - GPS		<p>MISSED APPROACH: Climb to 3000 direct ILINE and on track 068° to CURVY and hold, continue climb-in-hold to 3000.</p>
<p>▼ Rwy 1, 19, 10 and 28 helicopter visibility reduction below 1 SM NA.</p> <p>▲ When local altimeter setting not received, use Aberdeen Proving Grounds (Aberdeen) altimeter setting and increase all MDAs 80 feet.</p> <p>Procedure NA at night.</p>		

AWOS-3PT 132.725	KAPG ATIS * 124.425	POTOMAC APP CON 125.525 291.625	UNICOM 122.8 (CTAF) 0
----------------------------	-------------------------------	---	---------------------------------



CATEGORY	A	B	C	D
CIRCLING	960-1 548 (600-1)		NA	

MIRL Rwy 1-19 0
 REIL Rws 1 and 19 0
 REIL Rws 10 and 28

NE-3, 03 OCT 2024 to 31 OCT 2024

NE-3, 03 OCT 2024 to 31 OCT 2024