

WAAS CH <b>45926</b> <b>W03A</b>	APP CRS <b>027°</b>	Rwy Idg TDZE Apt Elev	<b>5003</b> <b>530</b> <b>537</b>
--	------------------------	-----------------------------	---

# RNAV (GPS) RWY 3

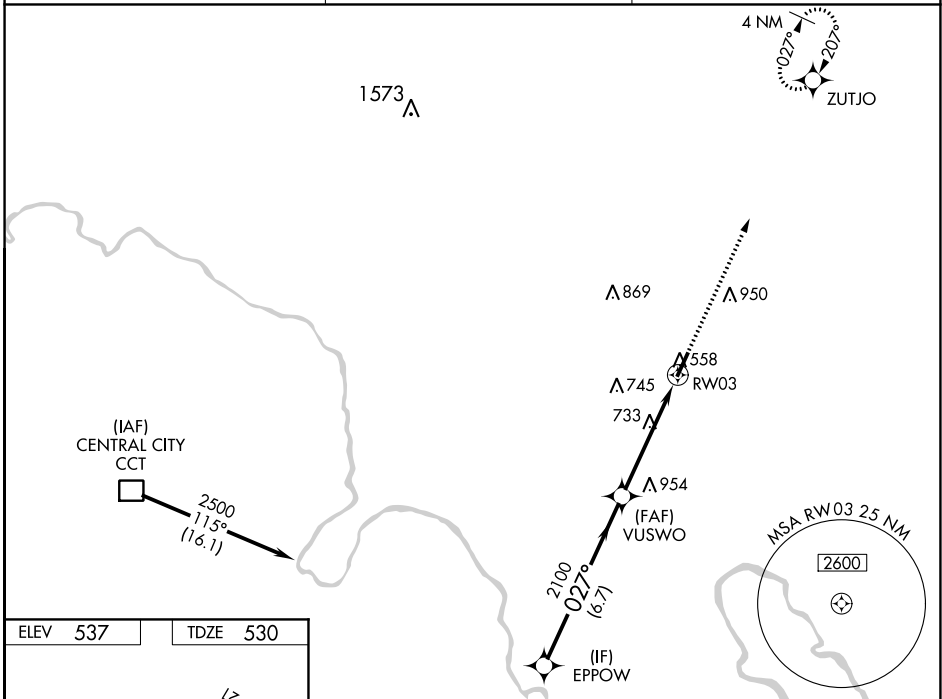
OHIO COUNTY (JQD)

RNP APCH - GPS

**⚠** Baro-VNAV and VDP NA when using Owensboro altimeter setting. For uncompensated Baro-VNAV systems, LNAV/VNAV NA below -16°C or above 54°C. When local altimeter setting not received, use Owensboro altimeter setting and increase LPV and LNAV/VNAV DA to 851 feet. Increase all MDA 80 feet and LNAV Cat C visibility  $\frac{3}{8}$  SM and Circling Cat C visibility  $\frac{1}{4}$  SM. Circling Rwy 21 NA at night. Rwy 3 helicopter visibility reduction below  $\frac{3}{8}$  SM NA.

**MISSED APPROACH:**  
Climb to 2500 direct ZUTJO and hold.

AWOS-3PT <b>132.1</b>	EVANSVILLE APP CON ★ <b>124.025 290.9</b>	UNICOM <b>122.8 (CTAF)</b> <b>📻</b>
--------------------------	--	--



SE-1, 31 OCT 2024 to 28 NOV 2024

ELEV <b>537</b>	TDZE <b>530</b>
-----------------	-----------------

