

NDB FOZ 345	APP CRS 160°	Rwy Idg TDZE Apt Elev	3998 1351 1351
-----------------------	------------------------	-----------------------------	---

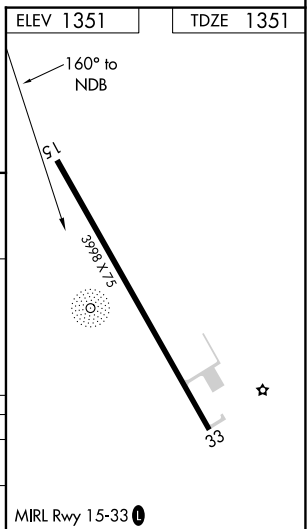
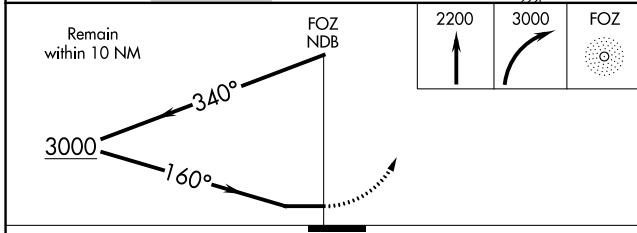
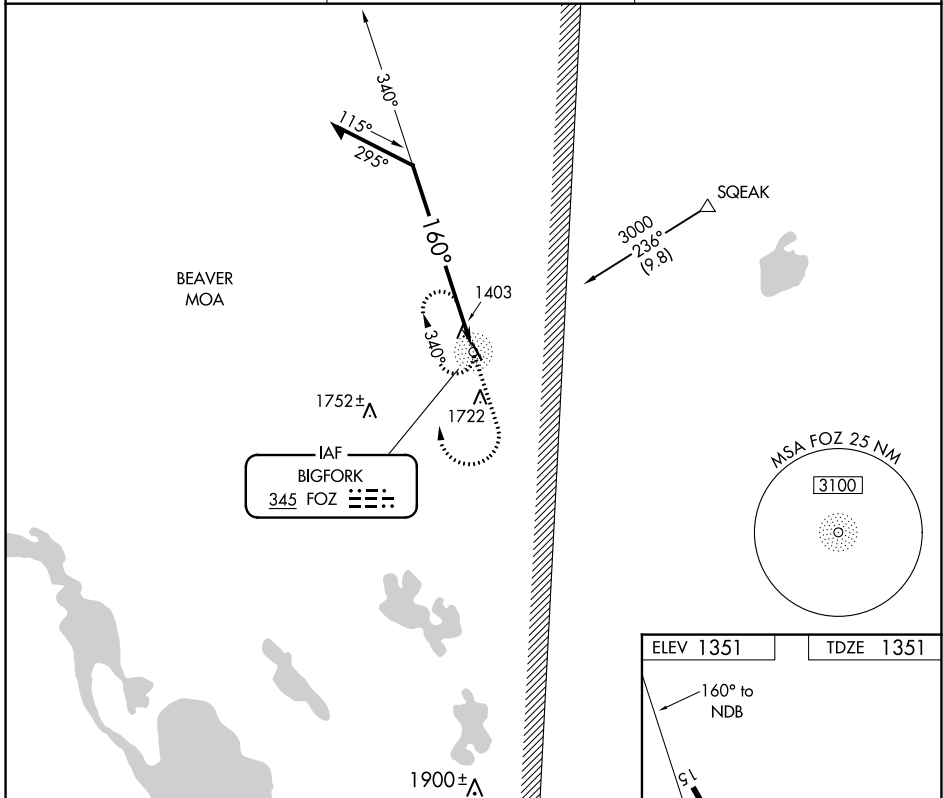
NDB RWY 15

BIGFORK MUNI (F0Z)

▼ Procedure not authorized when BEAVER MOA is active. Night landing Rwy 33 NA. Helicopter visibility reduction below 3/4 SM NA. **▲ NA** When local altimeter setting not received, use Grand Rapids altimeter setting and increase all MDA 100 feet.

MISSED APPROACH: Climb to 2200 then climbing right turn to 3000 direct FOZ NDB and hold.

AWOS-3PT 118.025	MINNEAPOLIS CENTER 127.9 281.45	CTAF 122.9 0
----------------------------	---	------------------------



CATEGORY	A	B	C	D
S-15	1840-1	489 (500-1)	NA	
CIRCLING	1840-1 489 (500-1)	2040-1 689 (700-1)	NA	

NC-1, 31 OCT 2024 to 28 NOV 2024

NC-1, 31 OCT 2024 to 28 NOV 2024