

| | | |
|--|------------------------|---|
| WAAS CH 45728 W27A | APP CRS 272° | Rwy Idg TDZE 1487 Apt Elev 1487 |
|--|------------------------|---|

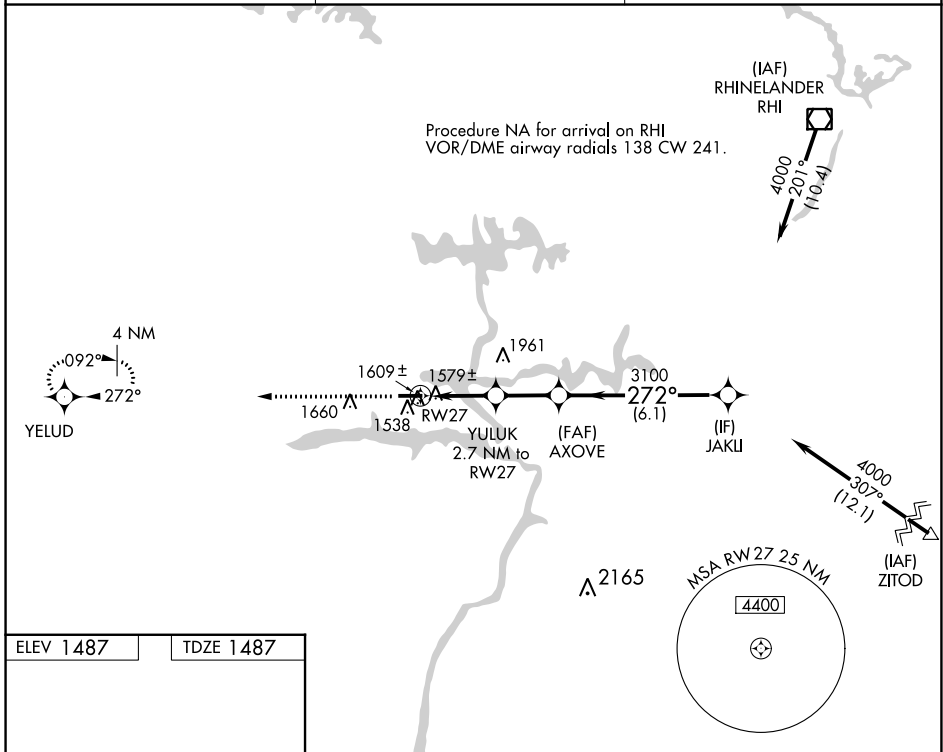
RNAV (GPS) RWY 27

TOMAHAWK RGNL (TKV)

⚠ Rwy 27 helicopter visibility reduction below 3/4 SM NA. DME/DME RNP-0.3 NA.
⚠ When local altimeter setting not received, use Rhinelander altimeter setting:
 increase all MDA 60 feet and visibility LP Cat C and D 1/8 SM and
 LNAV Cat C and D and Circling Cat D 1/4 SM.

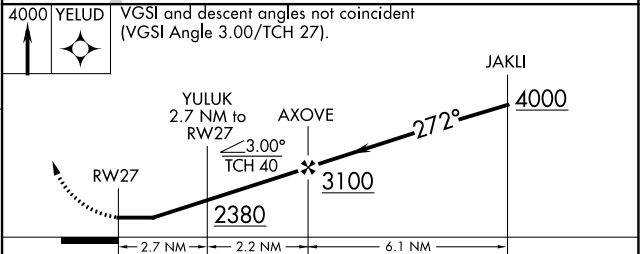
MISSED APPROACH:
 Climb to 4000 direct
 YELUD and hold.

| | | |
|--------------------------|---|---------------------------------|
| AWOS-3 118.250 | MINNEAPOLIS CENTER 133.65 281.5 | UNICOM 122.8 (CTAF) 0 |
|--------------------------|---|---------------------------------|



| | |
|-----------|-----------|
| ELEV 1487 | TDZE 1487 |
|-----------|-----------|

MIRL Rwy 9-27 0
 REIL Rws 9 and 27 0



| CATEGORY | A | B | C | D |
|----------|-------------|-------------|--------------|--------------|
| LP MDA | | 1840-1 | 353 (400-1) | |
| LNAV MDA | | 1860-1 | 373 (400-1) | |
| CIRCLING | 1920-1 | 2020-1 | 2020-1½ | 2320-2¾ |
| | 433 (500-1) | 533 (600-1) | 533 (600-1½) | 833 (900-2¾) |

EC-3, 31 OCT 2024 to 28 NOV 2024

EC-3, 31 OCT 2024 to 28 NOV 2024