

WAAS CH 70631 W31A	APP CRS 313°	Rwy Idg TDZE Apt Elev	4198 1606 1607
---------------------------------	------------------------	-----------------------------	---

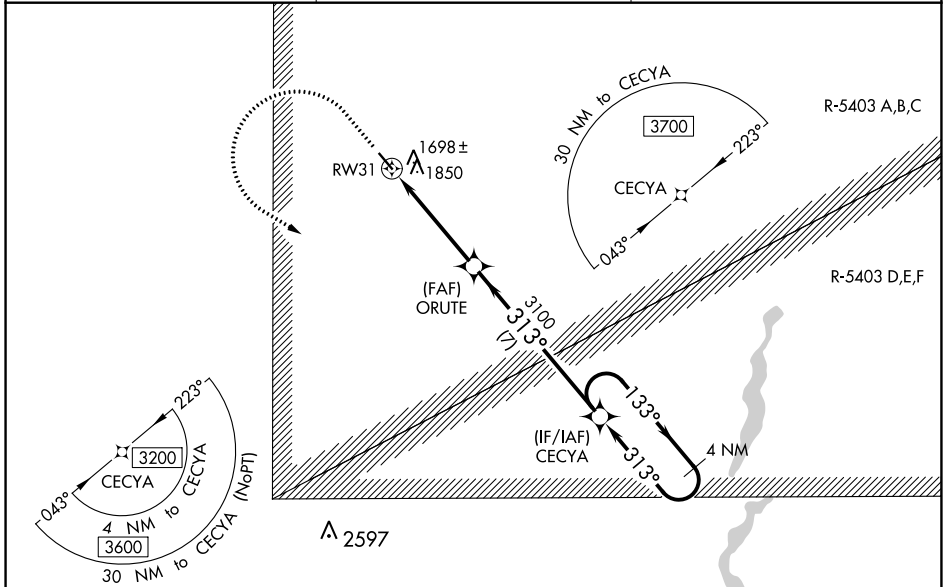
RNAV (GPS) RWY 31

CARRINGTON MUNI (46D)

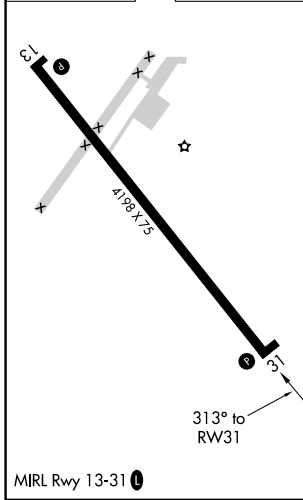
⚠ For uncompensated Baro-VNAV systems, LNAV/VNAV NA below -18°C (0°F) or above 54°C (130°F). DME/DME RNP-0.3 NA. Helicopter visibility reduction below 3/4 SM NA. Circling Rwy 13 NA at night. VDP and Baro-VNAV NA with Jamestown altimeter setting. When local altimeter setting not received, use Jamestown altimeter setting and increase all DA and MDA 100 feet, increase LPV all Cats visibility 1/8 mile; LNAV/VNAV all Cats visibility 3/8 mile; LNAV Cat C visibility 1/4 mile and Circling Cat C visibility 3/8 mile.

MISSED APPROACH: Climb to 2300 then climbing left turn to 3200 direct CECYA and hold.

AWOS-3 118.575	MINNEAPOLIS CENTER 124.2 270.3	CTAF 122.9 0
--------------------------	--	------------------------



ELEV 1607	TDZE 1606
-----------	-----------



2300 **3200** **CECYA** VGSI and RNAV glidepath not coincident (VGSI Angle 3.00/TCH 20). **4 NM Holding Pattern**

*** LNAV only**

ORUTE: RW31 → 3100 → 313° → 3100 → 313° → 3200

CECYA: 3200 → 133° → 3200

Distances: 1.7 NM to RW31, 2.9 NM, 7 NM

GP 3.00° TCH 40

CATEGORY	A	B	C	D
LPV DA	1856-1	250 (300-1)		NA
LNAV/VNAV DA	2050-1½	444 (500-1½)		NA
LNAV MDA	2160-1	554 (600-1)	2160-1½ 554 (600-1½)	NA
C CIRCLING	2200-1	593 (600-1)	2200-1½ 593 (600-1½)	NA

NC-1, 31 OCT 2024 to 28 NOV 2024

NC-1, 31 OCT 2024 to 28 NOV 2024