

APP CRS	Rwy Idg	<b>5000</b>
<b>216°</b>	TDZE	<b>80</b>
	Apt Elev	<b>80</b>

# RNAV (GPS) RWY 20

KLAWOCK (AKW) (PAKW)

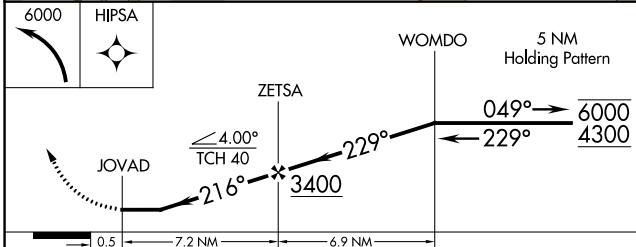
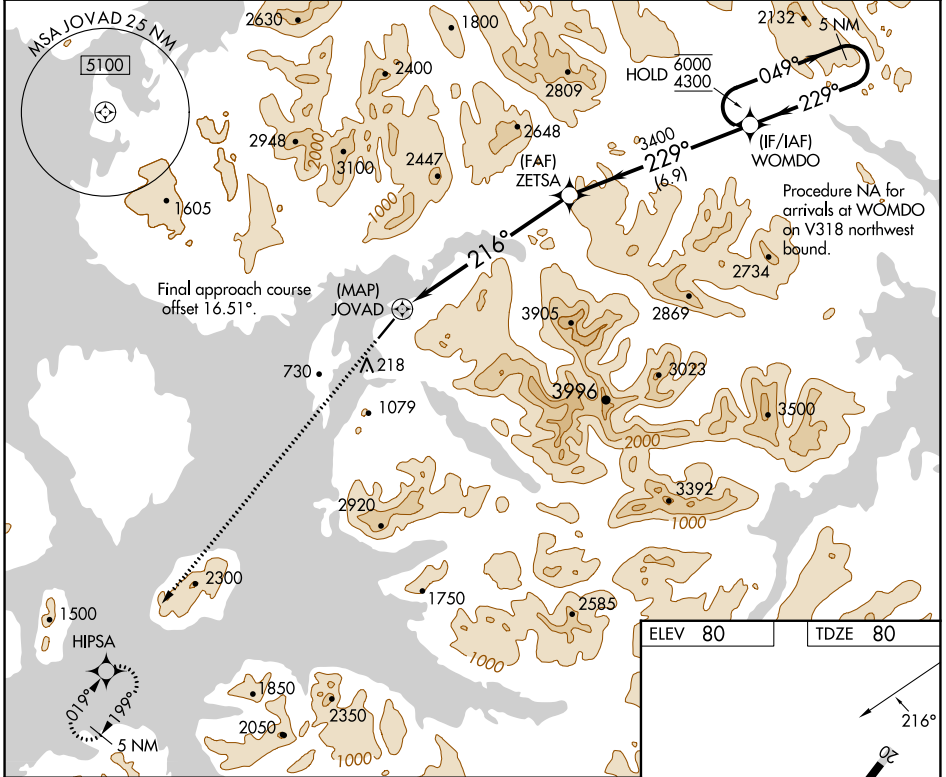
RNP APCH-GPS.

Procedure NA at night. Rwy 20 helicopter visibility reduction below 1 SM NA. Circling NA east of Rwy 2-20.

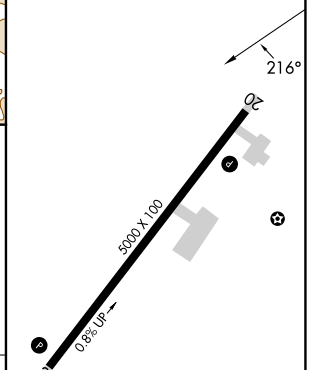
-9°C

MISSED APPROACH: Climbing left turn to 6000 direct HIPSA and hold, continue climb-in-hold to 6000.

ASOS <b>135.45</b>	ANCHORAGE CENTER <b>118.5 284.6</b>	KETCHIKAN RADIO <b>122.25 0</b>	CTAF <b>120.9</b>
-----------------------	--	------------------------------------	----------------------



ELEV 80	TDZE 80
---------	---------



CATEGORY	A	B	C	D
LNVA MDA	2340-1¼ 2260 (2300-1¼)	2340-1½ 2260 (2300-1½)		NA
CIRCLING	2340-1¼ 2260 (2300-1¼)	2340-1½ 2260 (2300-1½)		NA

REIL Rwy 2 and 20  
MIRL Rwy 2-20

AK, 31 OCT 2024 to 26 DEC 2024

AK, 31 OCT 2024 to 26 DEC 2024