

APP CRS	Rwy Idg	<b>3200</b>
<b>099°</b>	TDZE	<b>400</b>
	Apt Elev	<b>400</b>

# RNAV (GPS) RWY 10

WHITFORDS (B16)

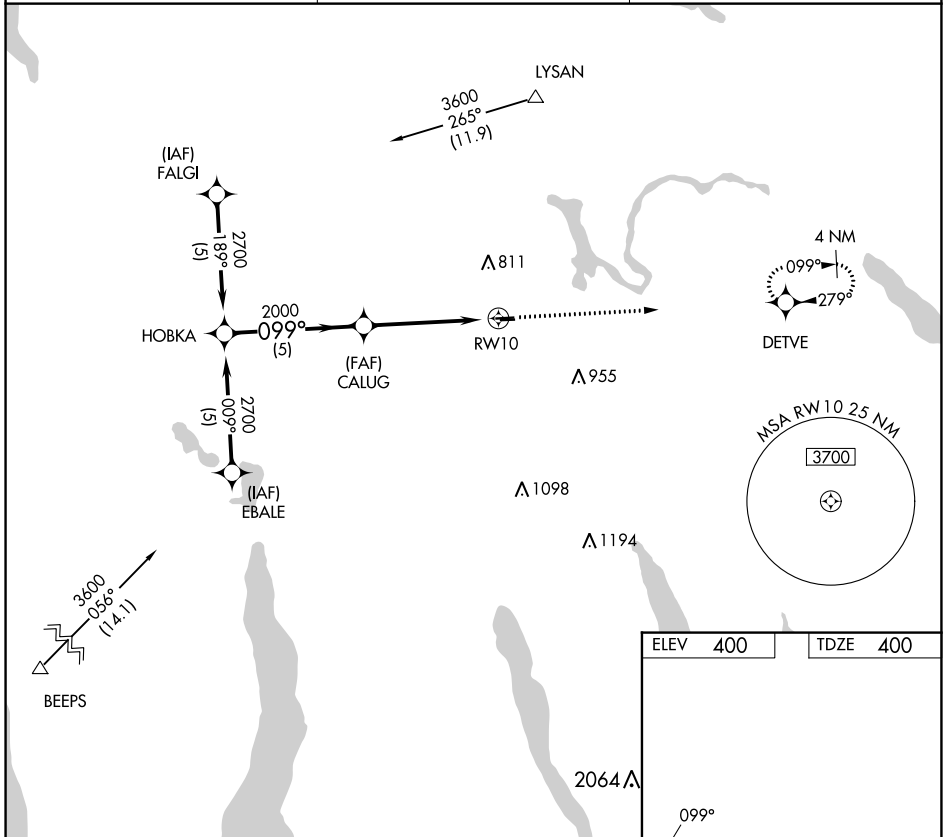
RNP APCH.
<p>▼ Use Syracuse altimeter setting. Procedure NA at night.</p> <p>▲ NA Rwy 10 helicopter visibility reduction below 1 SM NA.</p>

MISSED APPROACH: Climb to 3000 direct DETVE WP and hold.

SYRACUSE APP CON
<b>126.125 269.125</b>

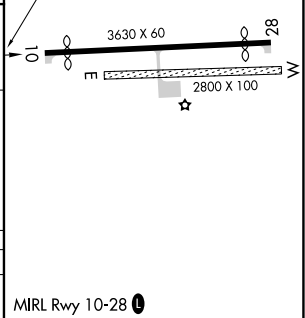
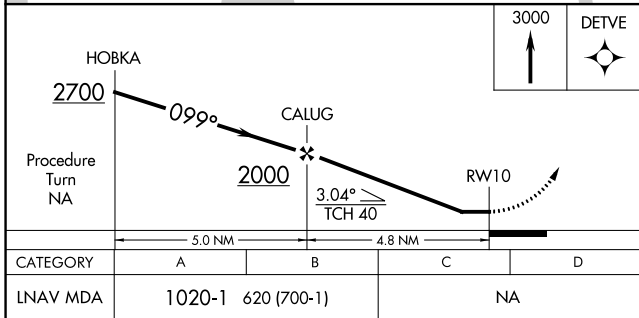
UNICOM
<b>122.8 (CTAF)</b>

<b>122.7</b>
--------------



NE-2, 31 OCT 2024 to 28 NOV 2024

NE-2, 31 OCT 2024 to 28 NOV 2024



CATEGORY	A	B	C	D
LNAV MDA	1020-1	620 (700-1)	NA	